

JASPERWOODS
RESIDENCES

TYPE B



JASPERWOODS

RESIDENCES

Unlike any other development in West Cairo, NEWGIZA is proud to announce that it has successfully launched products that aren't available elsewhere such as our very own state-of-the-art studios that are cozy and cleverly designed to make the most of space despite being smaller in surface area.

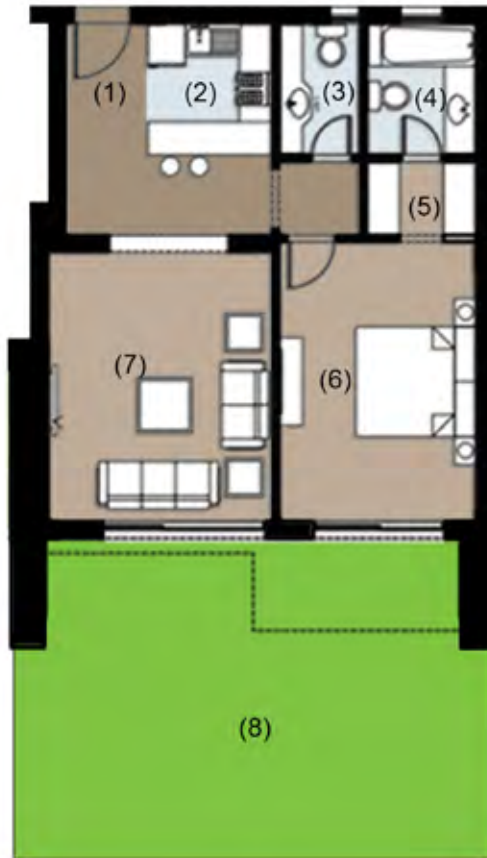
As the name implies, these residences overlook the lush greenery of the woods adding to the coziness of the design intended to engulf you in con-

tent warmth. The view of greenery is endless. JASPERWOODS is delicately placed amidst a circumference of botanically inspired gardens, giving residents the feeling that they are in their own private park.

The park includes a family friendly park, zen gardens for those wishing to meditate amongst nature, a yoga area, and areas for fitness and walking amongst endlessly cultivated gardens.

ONE BEDROOM APARTMENT

GROUND FLOOR



Total Unit Area 95 m²

1	Entrance Lobby	1.50 m x 2.40 m
2	Kitchenette	2.25 m x 2.40 m
3	Guest Toilet	1.45 m x 2.40 m
4	M. Bathroom	2.00 m x 2.40 m
5	Dressing Room	1.30 m x 2.00 m
6	Master Bedroom	3.60 m x 5.10 m
7	Reception	4.00 m x 4.90 m
8	Back Yard	50 m ²

All materials, dimensions and drawings are approximate. Information is subject to change without notice. Drawings are not to scale and actual usable floor space may vary from the state floor plans. The developer reserves the right to make revisions to the floor plans

FIRST FLOOR



Total Unit Area 103 m²

1	Entrance Lobby	1.50 m x 2.40 m
2	Kitchenette	2.25 m x 2.40 m
3	Guest Toilet	1.45 m x 2.40 m
4	M. Bathroom	2.00 m x 2.40 m
5	Dressing Room	1.30 m x 2.00 m
6	Master Bedroom	3.60 m x 5.10 m
7	Reception	4.00 m x 4.90 m
8	Terrace	1.80 m x 3.80 m

All materials, dimensions and drawings are approximate. Information is subject to change without notice. Drawings are not to scale and actual usable floor space may vary from the state floor plans. The developer reserves the right to make revisions to the floor plans

TWO BEDROOM APARTMENT

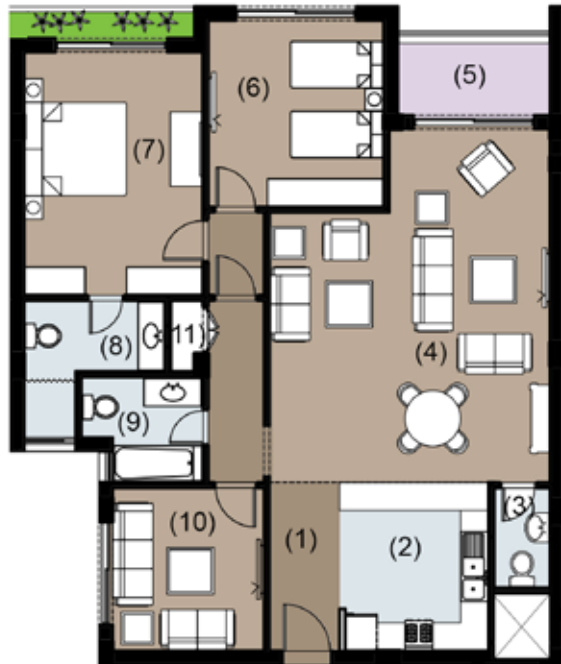
GROUND FLOOR



Total Unit Area 175 m²

1	Entrance Lobby	1.50 m x 3.60 m
2	Kitchen	3.20 m x 3.60 m
3	Guest Toilet	1.20 m x 2.10 m
4	Reception	6.00 m x 7.55 m
5	Bedroom	3.75 m x 4.00 m
6	Master Bedroom	3.80 m x 5.20 m
7	M. Bathroom	2.90 m x 3.00 m
8	Bathroom	2.25 m x 2.35 m
9	Living Room	3.25 m x 3.50 m
10	Utility	0.80 m x 1.50 m
11	Front Yard	70 m ²

All materials, dimensions and drawings are approximate. Information is subject to change without notice. Drawings are not to scale and actual usable floor space may vary from the state floor plans. The developer reserves the right to make revisions to the floor plans



Total Unit Area		183 m ²
1	Entrance Lobby	1.50 m x 3.60 m
2	Kitchen	3.20 m x 3.60 m
3	Guest Toilet	1.20 m x 2.10 m
4	Reception	6.00 m x 7.55 m
5	Terrace	1.80 m x 3.25 m
6	Bedroom	3.75 m x 4.00 m
7	Master Bedroom	3.80 m x 5.20 m
8	M. Bathroom	2.90 m x 3.00 m
9	Bathroom	2.25 m x 2.35 m
10	Living Room	3.25 m x 3.50 m
11	Utility	0.80 m x 1.50 m

All materials, dimensions and drawings are approximate. Information is subject to change without notice. Drawings are not to scale and actual usable floor space may vary from the state floor plans. The developer reserves the right to make revisions to the floor plans

THREE BEDROOM APARTMENT

SECOND | THIRD FLOOR



Total Unit Area

216 m²

1	Entrance Lobby	3.25 m x 2.75 m
2	Guest Toilet	1.65 m x 1.95 m
3	Utility	1.30 m x 1.95 m
4	Bathroom	1.95 m x 2.60 m
5	Dressing Room	1.95 m x 2.00 m
6	M. Bathroom	1.95 m x 2.50 m
7	Master Bedroom	3.70 m x 5.40 m
8	Bedroom 1	3.60 m x 4.10 m
9	Bedroom 2	3.60 m x 4.10 m
10	Reception	5.50 m x 7.95 m
11	Terrace	1.80 m x 3.80 m
12	Nanny's Room	1.90 m x 1.70 m
13	Nanny's Bathroom	1.40 m x 1.70 m
14	Kitchen	3.40 m x 4.00 m

All materials, dimensions and drawings are approximate. Information is subject to change without notice. Drawings are not to scale and actual usable floor space may vary from the state floor plans. The developer reserves the right to make revisions to the floor plans

THREE BEDROOM DUPLEX

GROUND & FIRST FLOOR

Total Unit Area 249 m²



GROUND FLOOR

Total Floor Area 120 m²

1	Entrance	1.60 m x 3.10 m
2	Guest Toilet	1.30 m x 2.00 m
3	Reception	7.70 m x 7.80 m
4	Garden	58 m ²
5	Kitchen	3.70 m x 4.40 m
6	Nanny's Room	1.70 m x 2.80 m
7	Nanny's Bathroom	1.00 m x 2.40 m
8	Utility	0.80 m x 1.00 m

FIRST FLOOR

Total Floor Area 129 m²

1	Bedroom 1	3.70 m x 3.85 m
2	Bathroom	2.00 m x 2.40 m
3	Bedroom 2	3.70 m x 3.85 m
4	Terrace	2.05 m x 3.75 m
5	Master Bedroom	3.90 m x 4.75 m
6	Dressing Room	2.00 m x 2.55 m
7	Master Bathroom	2.55 m x 2.90 m

All materials, dimensions and drawings are approximate. Information is subject to change without notice. Drawings are not to scale and actual usable floor space may vary from the state floor plans. The developer reserves the right to make revisions to the floor plans

THREE BEDROOM DUPLEX

SECOND & THIRD FLOOR

Total Unit Area 257 m²



SECOND FLOOR

Total Floor Area 128.5 m²

1	Entrance	1.60 m x 3.10 m
2	Guest Toilet	1.30 m x 2.00 m
3	Reception	7.70 m x 7.80 m
4	Terrace	2.05 m x 3.75 m
5	Kitchen	3.70 m x 4.40 m
6	Nanny's Room	1.70 m x 2.80 m
7	Nanny's Bathroom	1.00 m x 2.40 m
8	Utility	0.80 m x 1.00 m

THIRD FLOOR

Total Floor Area 128.5 m²

1	Bedroom 1	3.70 m x 3.85 m
2	Bathroom	2.00 m x 2.40 m
3	Bedroom 2	3.70 m x 3.85 m
4	Terrace	2.05 m x 3.75 m
5	Master Bedroom	3.90 m x 4.75 m
6	Dressing Room	2.00 m x 2.55 m
7	Master Bathroom	2.55 m x 2.90 m

All materials, dimensions and drawings are approximate. Information is subject to change without notice. Drawings are not to scale and actual usable floor space may vary from the state floor plans. The developer reserves the right to make revisions to the floor plans

GROUND & FIRST FLOOR

Total Unit Area 268 m²



GROUND FLOOR

Total Floor Area 128 m²

1	Entrance	1.60 m x 2.75 m
2	Guest Toilet	1.20 m x 1,85 m
3	Kitchen	3.00 m x 4.00 m
4	Reception	8.10 m x 8.80 m
5	Nanny's Bedroom	1.70 m x 2.80 m
6	Nanny's Bathroom	1.00 m x 2.40 m
7	Utility	0.80 m x 1.00 m
8	Garden	70 m ²

FIRST FLOOR

Total Floor Area 140 m²

1	Bedroom 1	4.00 m x 4.05 m
2	Bathroom	2.00 m x 2.65 m
3	Bedroom 2	4.00 m x 4.90 m
4	Terrace	0.75 m x 3.40 m
5	Terrace	2.05 m x 3.80 m
6	Master Bedroom	4.00 m x 4.40 m
7	Dressing Room	2.00 m x 4.00 m
8	Master Bathroom	3.10 m x 2.45 m

All materials, dimensions and drawings are approximate. Information is subject to change without notice. Drawings are not to scale and actual usable floor space may vary from the state floor plans. The developer reserves the right to make revisions to the floor plans

THREE BEDROOM DUPLEX

SECOND & THIRD FLOOR

Total Unit Area 281 m²



SECOND FLOOR

Total Floor Area

140 m²

1	Entrance	1.60 m x 2.75 m
2	Guest Toilet	1.20 m x 1,85 m
3	Kitchen	3.00 m x 4.00 m
4	Reception	8.10 m x 8.80 m
5	Terrace 1	3.80 m x 2.05 m
6	Terrace 2	0.75 m x 3.40 m
7	Nanny's Bedroom	1.70 m x 2.80 m
8	Nanny's Bathroom	1.00 m x 2.40 m
9	Utility	0.80 m x 1.00 m

THIRD FLOOR

Total Floor Area

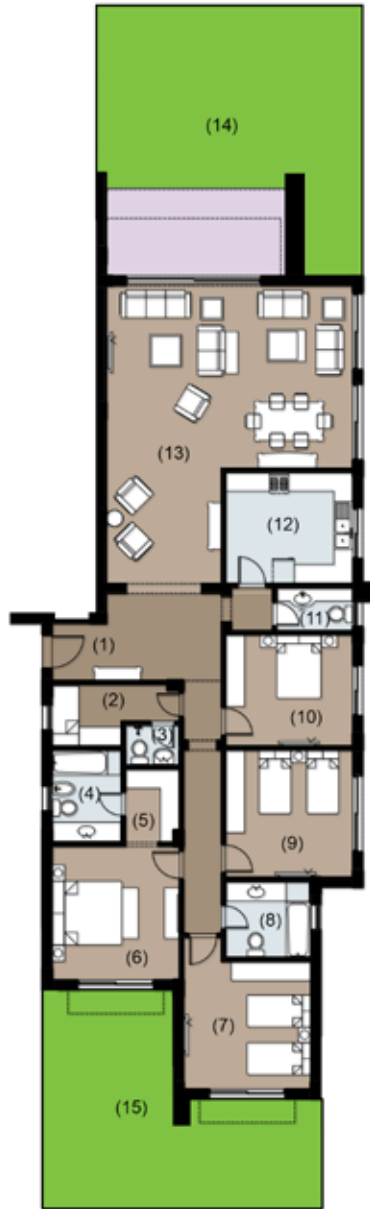
141 m²

1	Bedroom 1	4.00 m x 4.05 m
2	Bathroom	2.00 m x 2.65 m
3	Bedroom 2	4.00 m x 4.90 m
4	Terrace 1	0.85 m x 4.60 m
5	Terrace 2	3.80 m x 2.05 m
6	Master Bedroom	4.00 m x 4.40 m
7	Dressing Room	2.00 m x 4.00 m
8	Master Bathroom	3.10 m x 2.45 m

All materials, dimensions and drawings are approximate. Information is subject to change without notice. Drawings are not to scale and actual usable floor space may vary from the state floor plans. The developer reserves the right to make revisions to the floor plans

FOUR BEDROOM APARTMENT

GROUND FLOOR



Total Unit Area

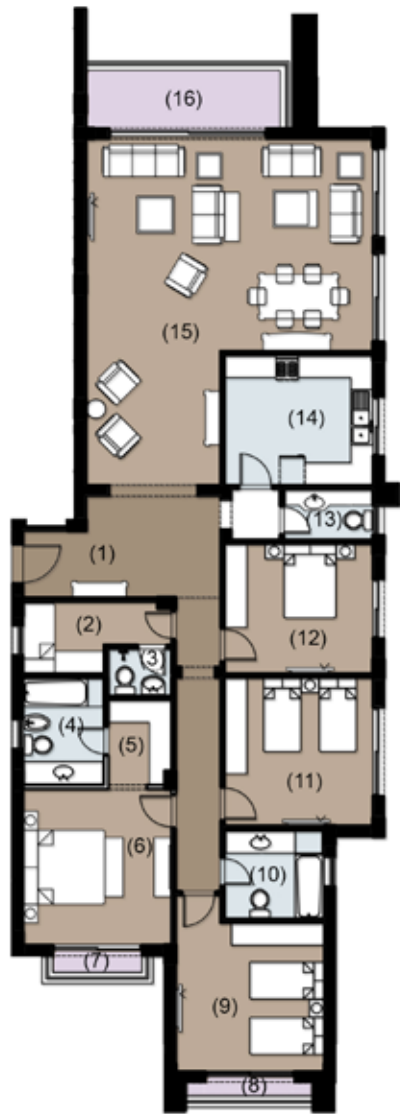
258 m²

1	Entrance Lobby	2.70 m x 5.30 m
2	Nanny's Room	1.90 m x 4.00 m
3	Nanny's Bathroom	1.25 m x 1.70 m
4	Bathroom	2.15 m x 2.90 m
5	Dressing Room	1.70 m x 2.30 m
6	Master Bedroom	4.00 m x 4.20 m
7	Bedroom 1	4.00 m x 4.00 m
8	Bathroom	2.65 m x 2.40 m
9	Bedroom 2	4.00 m x 4.00 m
10	Bedroom 3	3.50 m x 4.00 m
11	Guest Toilet	1.35 m x 4.00 m
12	Kitchen	3.50 m x 4.00 m
13	Reception	7.70 m x 9.35 m
14	Front Yard	65 m ²
15	Back Yard	40 m ²

All materials, dimensions and drawings are approximate. Information is subject to change without notice. Drawings are not to scale and actual usable floor space may vary from the state floor plans. The developer reserves the right to make revisions to the floor plans

FOUR BEDROOM APARTMENT

FIRST | SECOND | THIRD FLOOR



Total Unit Area		275 m ²
1	Entrance Lobby	2.70 m x 5.30 m
2	Nanny's Room	1.90 m x 4.00 m
3	Nanny's Bathroom	1.25 m x 1.70 m
4	Bathroom	2.15 m x 2.90 m
5	Dressing Room	1.70 m x 2.30 m
6	Master Bedroom	4.00 m x 4.20 m
7	Terrace	0.75 m x 3.00 m
8	Terrace	0.75 m x 3.40 m
9	Bedroom 1	4.00 m x 4.00 m
10	Bathroom	2.40 m x 2.65 m
11	Bedroom 2	4.00 m x 4.00 m
12	Bedroom 3	3.50 m x 4.00 m
13	Guest Toilet	1.35 m x 2.40 m
14	Kitchen	3.50 m x 4.00 m
15	Reception	7.70 m x 9.35 m
16	Shaded Terrace	1.80 m x 5.15 m

All materials, dimensions and drawings are approximate. Information is subject to change without notice. Drawings are not to scale and actual usable floor space may vary from the state floor plans. The developer reserves the right to make revisions to the floor plans



3 AL MANSOUR MOHAMED ST., ZAMALEK - 11211, CAIRO, EGYPT.

T: +202 27390700 | F: +202 27351114 | SALES CENTER: 16656

NEWGIZA.COM