

JASPERWOODS
RESIDENCES

TYPE C



JASPERWOODS

RESIDENCES

Unlike any other development in West Cairo, NEWGIZA is proud to announce that it has successfully launched products that aren't available elsewhere such as our very own state-of-the-art studios that are cozy and cleverly designed to make the most of space despite being smaller in surface area.

As the name implies, these residences overlook the lush greenery of the woods adding to the coziness of the design intended to engulf you in con-

tent warmth. The view of greenery is endless. JASPERWOODS is delicately placed amidst a circumference of botanically inspired gardens, giving residents the feeling that they are in their own private park.

The park includes a family friendly park, zen gardens for those wishing to meditate amongst nature, a yoga area, and areas for fitness and walking amongst endlessly cultivated gardens.

ONE BEDROOM APARTMENT

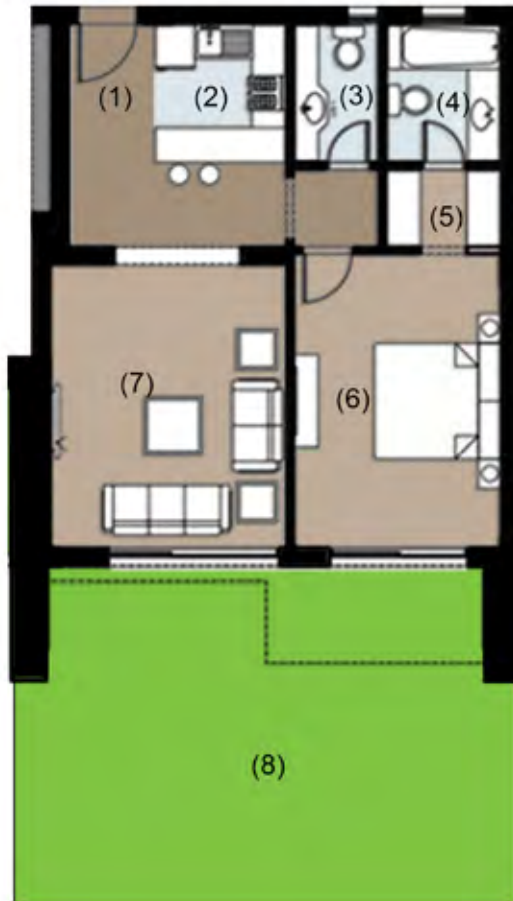
GROUND FLOOR



Total Unit Area		83 m ²
1	Entrance Lobby	1.40 m x 4.45 m
2	Guest Toilet	1.45 m x 2.25 m
3	Kitchen	2.35 m x 3.05 m
4	Reception	3.80 m x 4.60 m
5	Garden	40 m ²
6	Master Bedroom	3.60 m x 4.00 m
7	Master Bathroom	2.00 m x 2.30 m
8	Lobby	1.70 m x 1.80 m

All materials, dimensions and drawings are approximate. Information is subject to change without notice. Drawings are not to scale and actual usable floor space may vary from the state floor plans. The developer reserves the right to make revisions to the floor plans

GROUND FLOOR



Total Unit Area 95 m²

1	Entrance Lobby	1.50 m x 2.40 m
2	Kitchenette	2.25 m x 2.40 m
3	Guest Toilet	1.45 m x 2.40 m
4	M. Bathroom	2.00 m x 2.40 m
5	Dressing Room	1.30 m x 2.00 m
6	Master Bedroom	3.60 m x 5.10 m
7	Reception	4.00 m x 4.90 m
8	Backyard	50 m ²

All materials, dimensions and drawings are approximate. Information is subject to change without notice. Drawings are not to scale and actual usable floor space may vary from the state floor plans. The developer reserves the right to make revisions to the floor plans

ONE BEDROOM APARTMENT

FIRST FLOOR



Total Unit Area 88 m²

1	Entrance Lobby	1.40 m x 4.45 m
2	Guest Toilet	1.45 m x 2.25 m
3	Kitchen	2.35 m x 3.05 m
4	Reception	3.80 m x 4.60 m
5	Terrace	0.75 m x 3.00 m
6	Terrace	0.75 m x 3.00 m
7	Master Bedroom	3.60 m x 4.00 m
8	Master Bathroom	2.00 m x 2.30 m
9	Lobby	1.70 m x 1.80 m

All materials, dimensions and drawings are approximate. Information is subject to change without notice. Drawings are not to scale and actual usable floor space may vary from the state floor plans. The developer reserves the right to make revisions to the floor plans

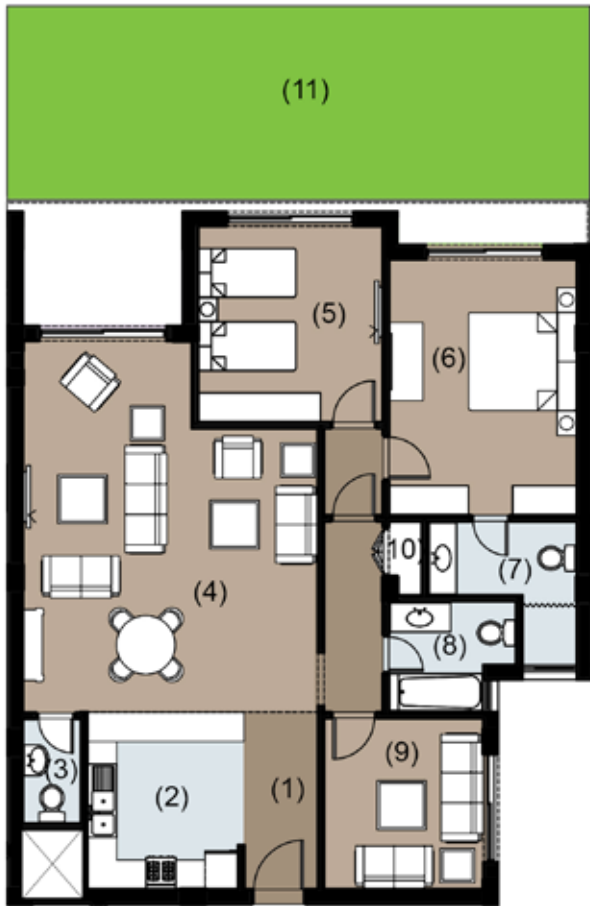


Total Unit Area 103 m²

1	Entrance Lobby	1.50 m x 2.40 m
2	Kitchenette	2.25 m x 2.40 m
3	Guest Toilet	1.45 m x 2.40 m
4	M. Bathroom	2.00 m x 2.40 m
5	Dressing Room	1.30 m x 2.00 m
6	Master Bedroom	3.60 m x 5.10 m
7	Reception	4.00 m x 4.90 m
8	Terrace	1.80 m x 3.80 m

TWO BEDROOM APARTMENT

GROUND FLOOR



Total Unit Area		175 m ²
1	Entrance Lobby	1.50 m x 3.60 m
2	Kitchen	3.20 m x 3.60 m
3	Guest Toilet	1.20 m x 2.10 m
4	Reception	6.00 m x 7.55 m
5	Bedroom	3.75 m x 4.00 m
6	Master Bedroom	3.80 m x 5.20 m
7	M. Bathroom	2.90 m x 3.00 m
8	Bathroom	2.25 m x 2.35 m
9	Living Room	3.25 m x 3.50 m
10	Utility	0.80 m x 1.50 m
11	Front Yard	70 m ²

All materials, dimensions and drawings are approximate. Information is subject to change without notice. Drawings are not to scale and actual usable floor space may vary from the state floor plans. The developer reserves the right to make revisions to the floor plans

GROUND FLOOR



Total Unit Area

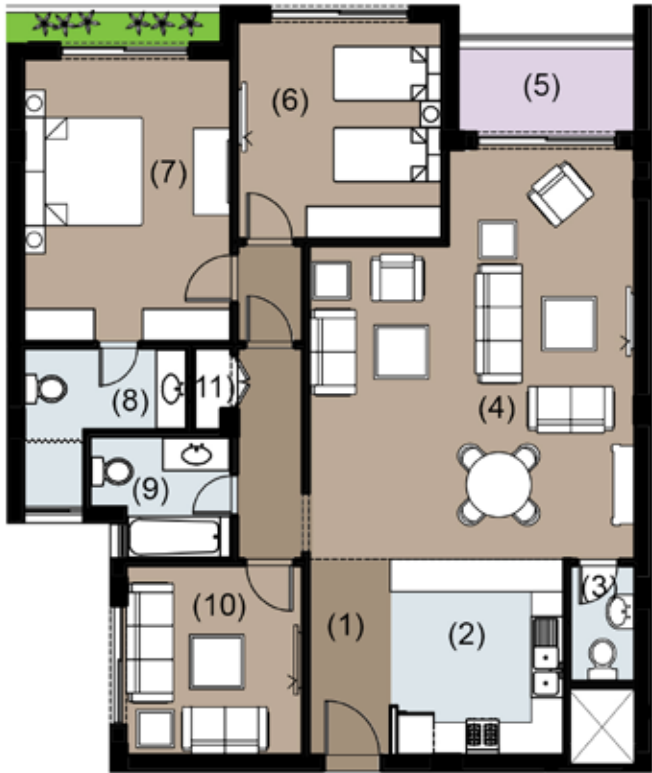
178 m²

1	Entrance Lobby	1.90 m x 3.60 m
2	Reception & Dining	7.75 m x 8.90 m
3	Garden	58 m ²
4	Kitchen	3.20 m x 4.00 m
5	Guest Toilet	1.20 m x 2.55 m
6	Bedroom	3.60 m x 4.00 m
7	Bathroom	1.90 m x 2.30 m
8	Master Bathroom	1.90 m x 4.00 m
9	Master Bedroom	3.90 m x 5.30 m
10	Utility	1.05 m x 2.05 m

All materials, dimensions and drawings are approximate. Information is subject to change without notice. Drawings are not to scale and actual usable floor space may vary from the state floor plans. The developer reserves the right to make revisions to the floor plans

TWO BEDROOM APARTMENT

FIRST | SECOND | THIRD FLOOR



Total Unit Area		183 m²
1	Entrance Lobby	1.50 m x 3.60 m
2	Kitchen	3.20 m x 3.60 m
3	Guest Toilet	1.20 m x 2.10 m
4	Reception	6.00 m x 7.55 m
5	Terrace	1.80 m x 3.25 m
6	Bedroom	3.75 m x 4.00 m
7	Master Bedroom	3.80 m x 5.20 m
8	M. Bathroom	2.90 m x 3.00 m
9	Bathroom	2.25 m x 2.35 m
10	Living Room	3.25 m x 3.50 m
11	Utility	0.80 m x 1.50 m

All materials, dimensions and drawings are approximate. Information is subject to change without notice. Drawings are not to scale and actual usable floor space may vary from the state floor plans. The developer reserves the right to make revisions to the floor plans

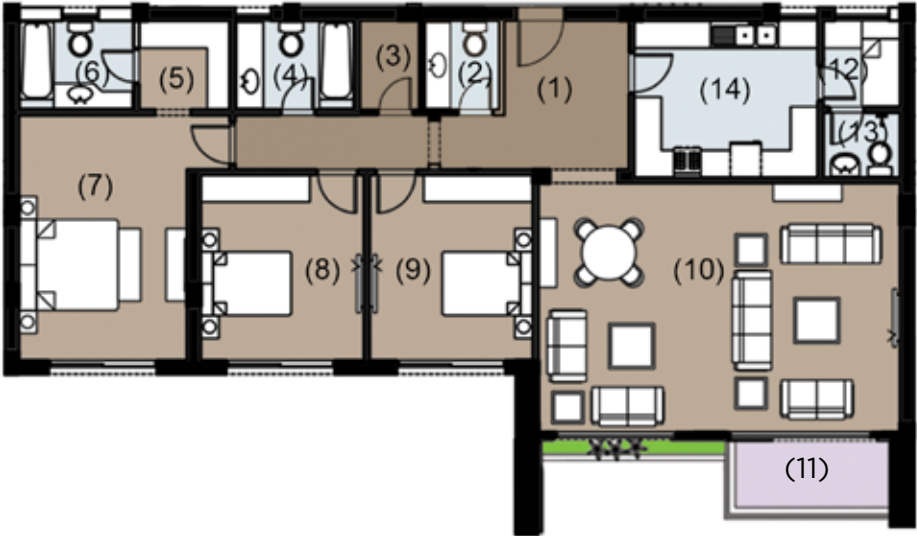


Total Unit Area 191 m²

1	Entrance Lobby	1.95 m x 3.60 m
2	Reception & Dining	7.75 m x 8.90 m
3	Terrace	2.05 m x 5.15 m
4	Kitchen	3.20 m x 4.00 m
5	Guest Toilet	1.20 m x 2.55 m
6	Bedroom	3.60 m x 4.00 m
7	Bathroom	1.90 m x 2.30 m
8	Master Bathroom	1.90 m x 4.00 m
9	Master Bedroom	3.90 m x 5.30 m
10	Utility	1.05 m x 2.05 m

THREE BEDROOM APARTMENT

SECOND | THIRD FLOOR



Total Unit Area 216 m²

1	Entrance Lobby	3.25 m x 2.75 m
2	Guest Toilet	1.65 m x 1.95 m
3	Utility	1.30 m x 1.95 m
4	Bathroom	1.95 m x 2.60 m
5	Dressing Room	1.95 m x 2.00 m
6	M. Bathroom	1.95 m x 2.50 m
7	Master Bedroom	3.70 m x 5.40 m
8	Bedroom 1	3.60 m x 4.10 m
9	Bedroom 2	3.60 m x 4.10 m
10	Reception	5.50 m x 7.95 m
11	Terrace	1.80 m x 3.80 m
12	Nanny's Room	1.90 m x 1.70 m
13	Nanny's Bathroom	1.40 m x 1.70 m
14	Kitchen	3.40 m x 4.00 m



3 AL MANSOUR MOHAMED ST., ZAMALEK - 11211, CAIRO, EGYPT.

T: +202 27390700 | F: +202 27351114 | SALES CENTER: 16656

NEWGIZA.COM