



SKY LAKES

NEWGIZA

I

-

NEWGIZA

II

-

SKY LAKES

III

-

INTRODUCTION

IV

-

ACCESSIBILITY

V

-

ARCHITECTURE

VI

-

FLOORPLANS

SKY LAKES

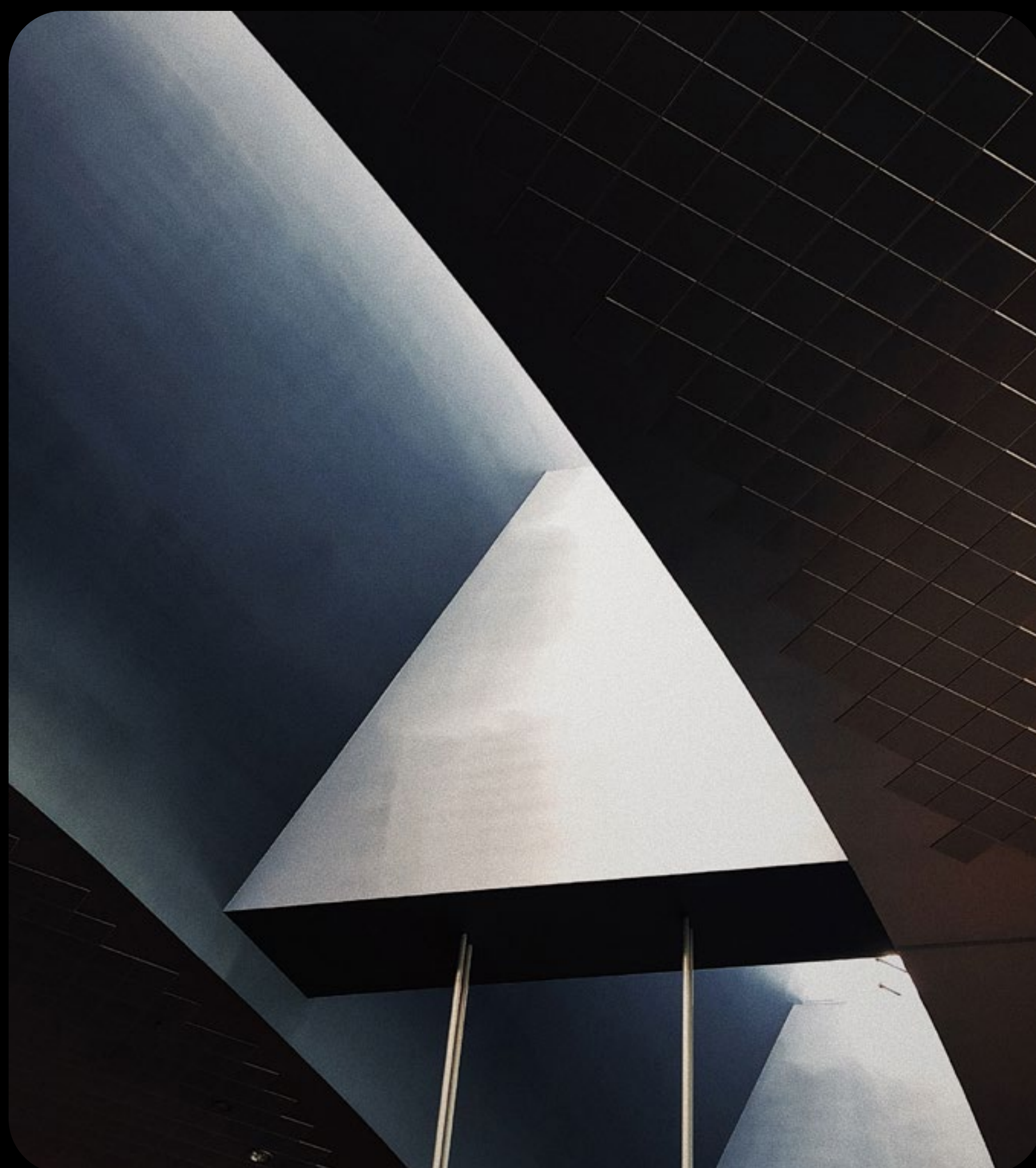
NEWGIZA

I

—

NEWGIZA

NEWGIZA, A VISIONARY DEVELOPER.



Newgiza is a visionary developer, carrying forward an ancient legacy that effortlessly captures a distinctive sense of evolution to blur the lines between the past & present.

Introducing a contemporary interpretation inspired by ancient supremacy, Newgiza boasts an upscale residential and commercial community, stepped in unrivaled quality and integrated excellence to empower residents to grow beyond the conventional.

Artfully planned to take integrated living to new heights, Newgiza rolls out on an impressive 6.5 million square meters of lush land, perched high above Cairo to take in uninterrupted vistas of the Giza Pyramids, as well as the magical city beyond.

SKY LAKES

NEWGIZA

INTRODUCING SKY LAKES





Expertly master-planned by Die Stadt and designed with natural serenity and true exclusivity in mind, Sky Lakes is Newgiza's latest phase, crowning a prime location of evident differentiation.

The project adopts an open layout, mindfully nestled amidst flowing lakes and limitless greenery to invite residents to connect with earth's magical gifts while enjoying a vibrant community at their doorstep.

Sleek, sophisticated and simply exquisite, Sky Lakes offers a wide range of spacious twin villas and duplexes to cater to contemporary lifestyles, but most importantly, supreme open spaces where nature lives indoors. The project also houses a state-of-the-art hotel, powered by plush amenities and signature experiences to bring upscale hospitality and impeccable service to spirited life.

GENEROUSLY SPACIOUS, INTIMATELY EXCLUSIVE.



To live at Sky Lakes is to experience the essence of harmonious living day after day. Every aspect of the project has been expertly designed with sustainability in mind to introduce a breathing lifestyle tailored around your wellbeing and mindful existence.

Wake up to panoramic views of flowing lakes and picturesque landscapes chasing you indoors wherever you turn. Sip on a refreshing cocktail in your own garden oasis and enjoy the quiet, as the sky changes color with every passing cloud. And when the day draws to an end, connect with your loved ones in a fully-integrated community, redefining world-class leisure and entertainment without having to travel thousands of miles.

ACCESSIBILITY



Sky Lakes boasts a premium location that places your life at the heart of NEWGIZA. The project is strategically situated at the intersection of NG Town, Art Life and the 44 exclusive phase to surround residents with inescapable vibrancy, unrivaled exclusivity and colorful discovery for the whole family. Planned with ultimate convenience in mind, Sky Lakes is easily accessible from 26th of July Corridor in Sheikh Zayed, providing safe and seamless exit and entry.





ART LIFE

ARTISTIC DISCOVERY INSPIRING EVERYDAY LIFE

Art Life is a progressive commercial and residential strip comprised of modern plots designed for mixed-use purposes.

It will have offices, business branches, retail, fashion, entertainment, F&B, and residential units, so people can work, play, live, and enjoy in a European-like urban yet manicured destination.

NG TOWN

NG Town is strategically located near the borders of Newgiza to facilitate accessibility for both Newgiza residents and guests. It is also adjacent to Newgiza University and a five-star hotel to cater to students and hotel guests.

NG Town is where everyone and everything come together to give that youthful and vibrant feel of notable downtown areas in cosmopolitan cities worldwide.

It is a place that offers office spaces, art galleries, retail, exclusive department stores, restaurants and various fine dining options. For entertainment and culture NG Town brings you Music Hall, the amazing Galleria Grove with its eight cinema theaters, and much more. The office buildings will all have an exchange garden exclusive to them, ensuring peace and privacy when it is desired, yet maintaining access to everything else Downtown has to offer.

SKY LAKES

NEWGIZA

ARCHITECTURE

AVANT GARDE SOPHISTICATION, A TIMELESS LIVING IMPRESSION.

INSPIRED ARCHITECTURE

Designed by Alchemy Architecture, Sky Lakes re-imagines the foundations of space, fluidity and connectivity from an innovative outlook to introduce a harmonious vision of modern-day function and aesthetic form.

By melding privacy, luxury and convenience as cornerstones, the project opens residents' eyes on Avant Garde sophistication, infusing minimal geometric designs with sleek wooden touches and serene monotones. Impressive motifs, utilizing a variation of neutral color schemes beautifully contrast with infinite greenery to awaken a signature design statement where less is simply more.

SKY LAKES

NEWGIZA



SKY LAKES

NEWGIZA



FLOORPLANS

DELUXE
TWINVILLA

BUA 440 SQM

SKY LAKES

NEWGIZA



SKY LAKES

NEWGIZA

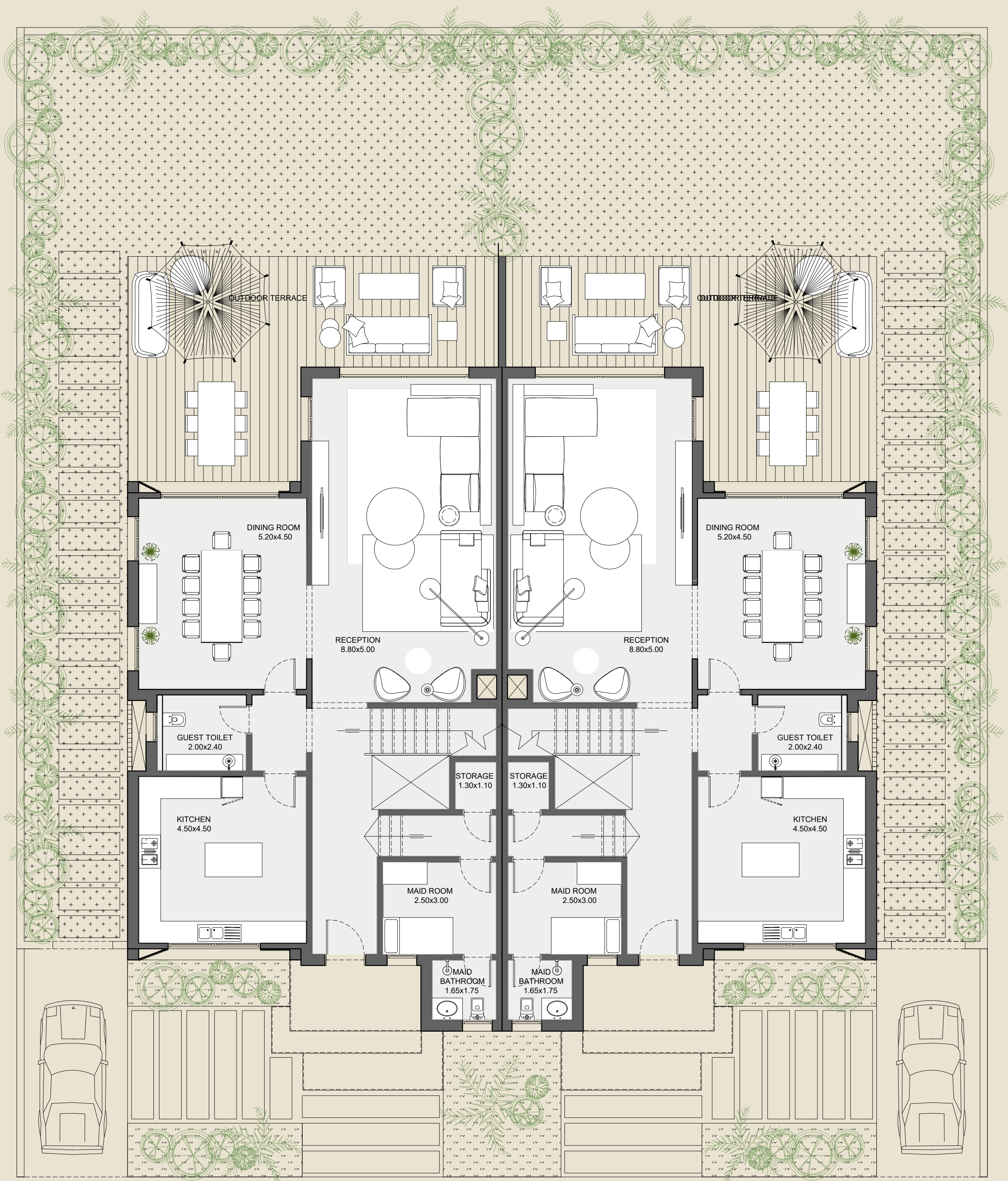


SKY LAKES

NEWGIZA



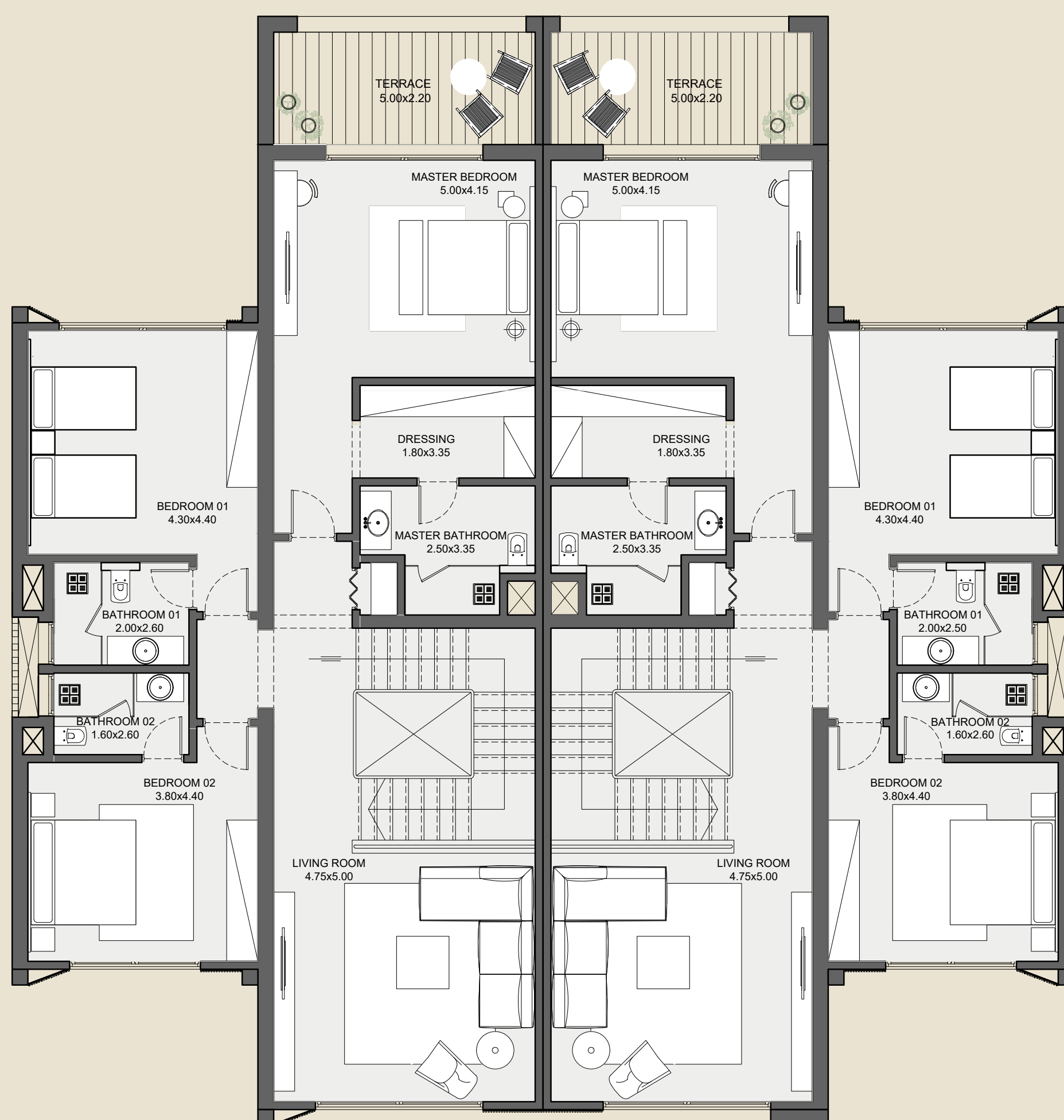
GROUND FLOOR



DISCLAIMER

1. Drawings are not to scale. 2. The architectural details, dimensions and area in this plan are based on Schematic Design information only, and final As-Built conditions may vary. 3. All units are sold as unfurnished villas, without furniture and furnishings, without white goods provisions, etc. 4. All images used are for illustrative purposes only and do not represent the actual size, features, specifications, fittings, and furnishings. 5. Newgiza reserves the right to make revisions/alterations, at its absolute discretion, and without liability.

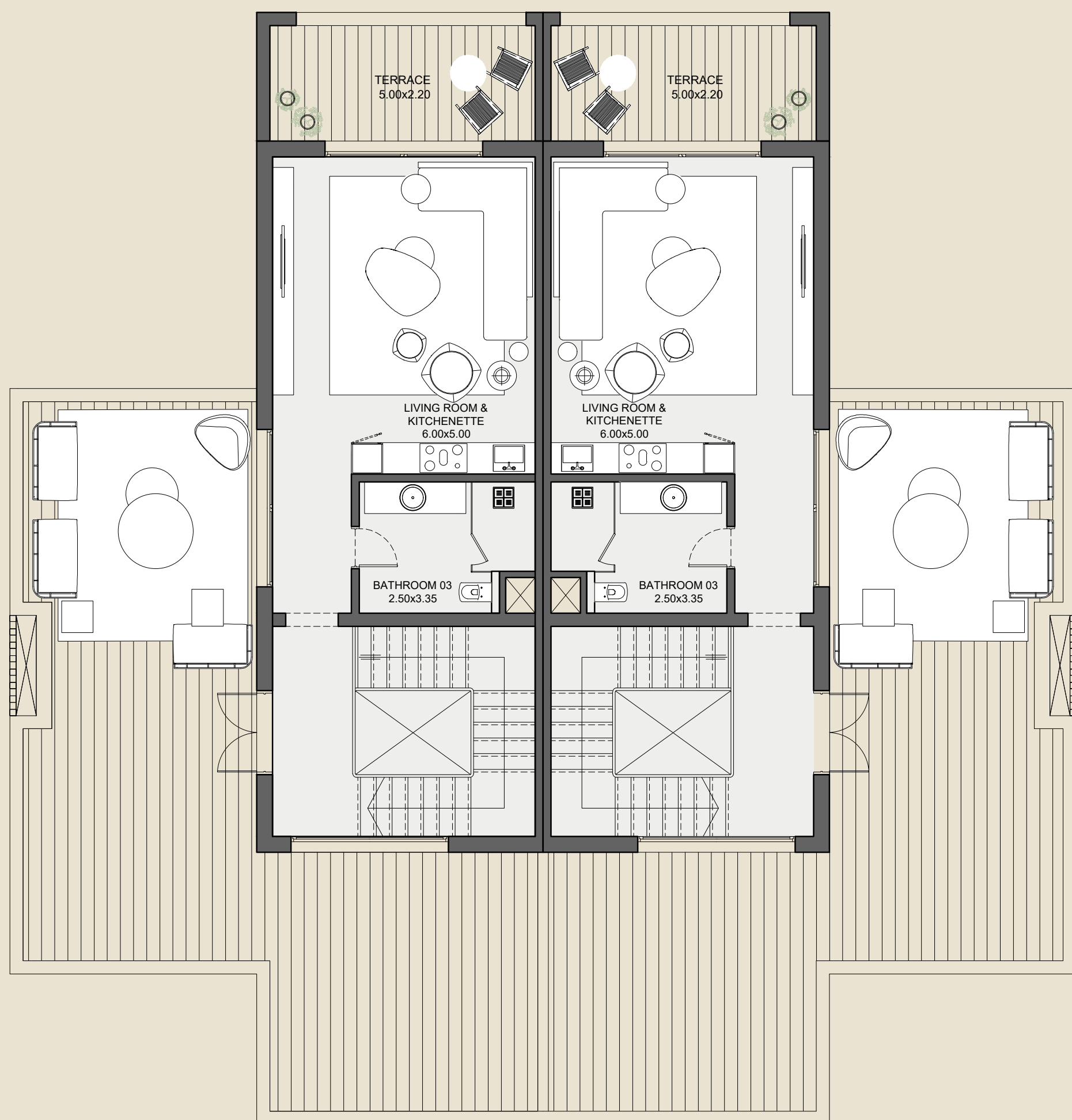
FIRST FLOOR



DISCLAIMER

1. Drawings are not to scale. 2. The architectural details, dimensions and area in this plan are based on Schematic Design information only, and final As-Built conditions may vary. 3. All units are sold as unfurnished villas, without furniture and furnishings, without white goods provisions, etc. 4. All images used are for illustrative purposes only and do not represent the actual size, features, specifications, fittings, and furnishings. 5. Newgiza reserves the right to make revisions/alterations, at its absolute discretion, and without liability.

ROOF



DISCLAIMER

1. Drawings are not to scale. 2. The architectural details, dimensions and area in this plan are based on Schematic Design information only, and final As-Built conditions may vary. 3. All units are sold as unfurnished villas, without furniture and furnishings, without white goods provisions, etc. 4. All images used are for illustrative purposes only and do not represent the actual size, features, specifications, fittings, and furnishings. 5. Newgiza reserves the right to make revisions/alterations, at its absolute discretion, and without liability.

GRAND TWINVILLA

BUA 568 SQM

SKY LAKES

NEWGIZA



SKY LAKES

NEWGIZA

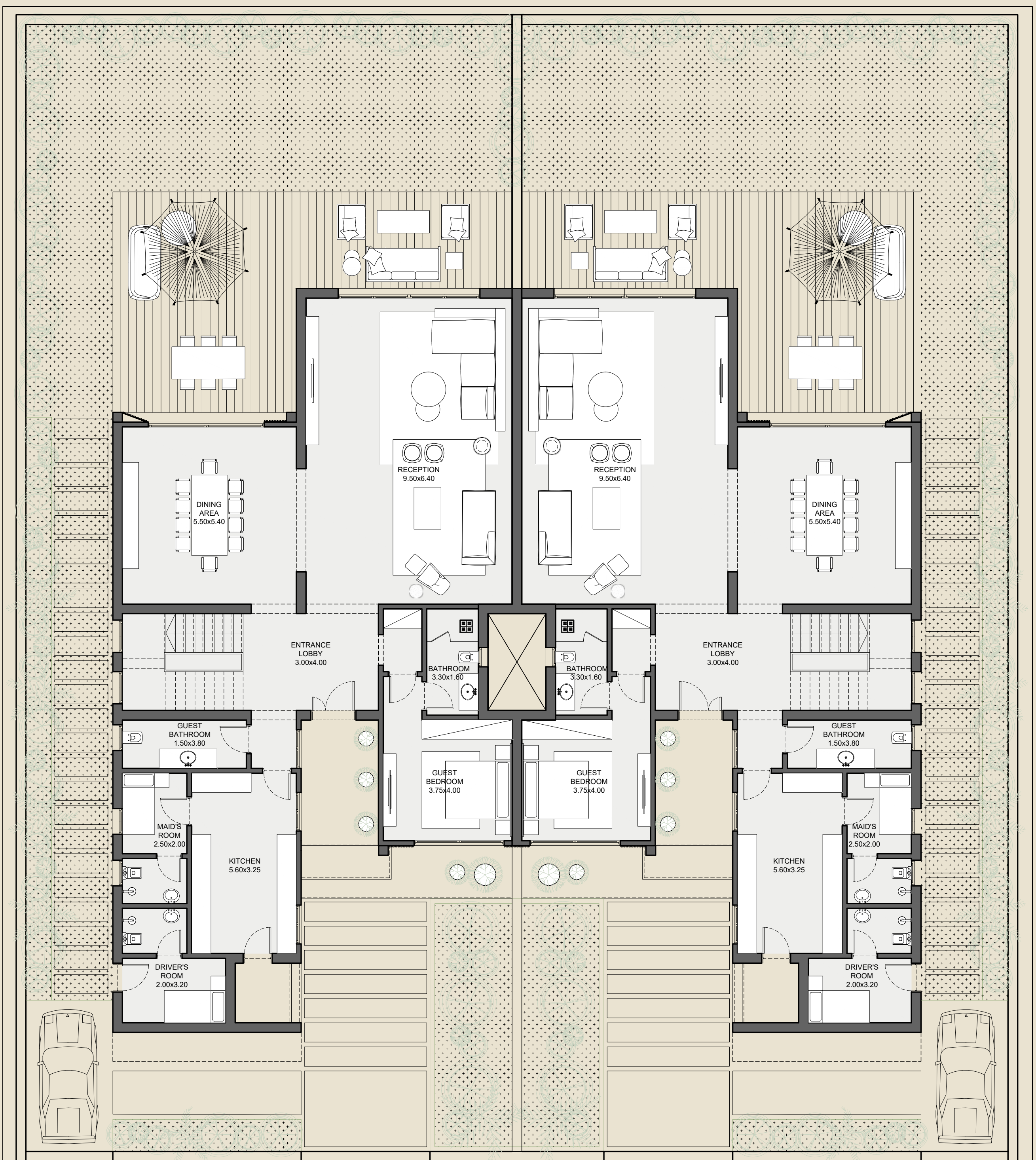


SKY LAKES

NEWGIZA



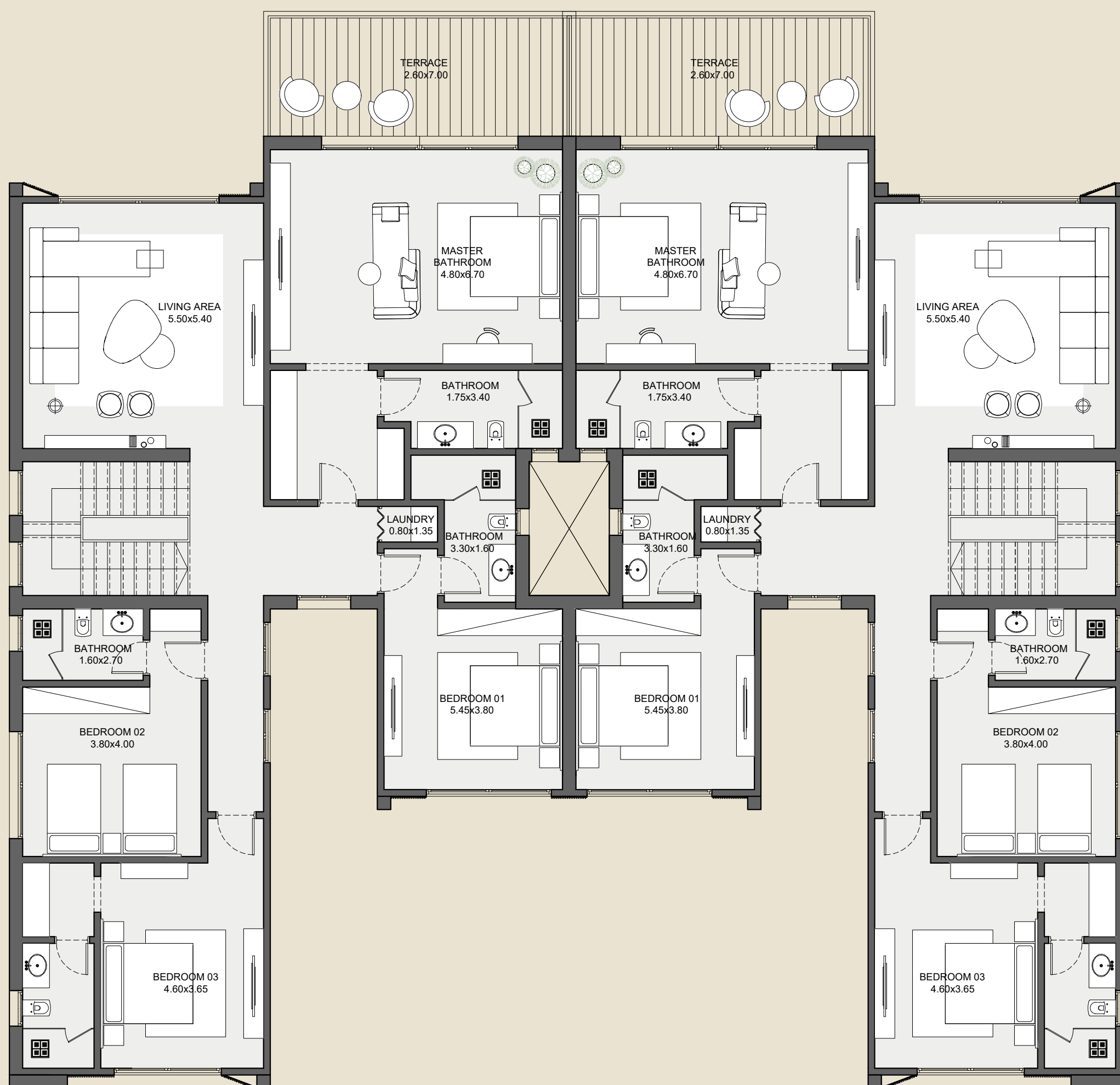
GROUND FLOOR



DISCLAIMER

1. Drawings are not to scale. 2. The architectural details, dimensions and area in this plan are based on Schematic Design information only, and final As-Built conditions may vary. 3. All units are sold as unfurnished villas, without furniture and furnishings, without white goods provisions, etc. 4. All images used are for illustrative purposes only and do not represent the actual size, features, specifications, fittings, and furnishings. 5. Newgiza reserves the right to make revisions/alterations, at its absolute discretion, and without liability.

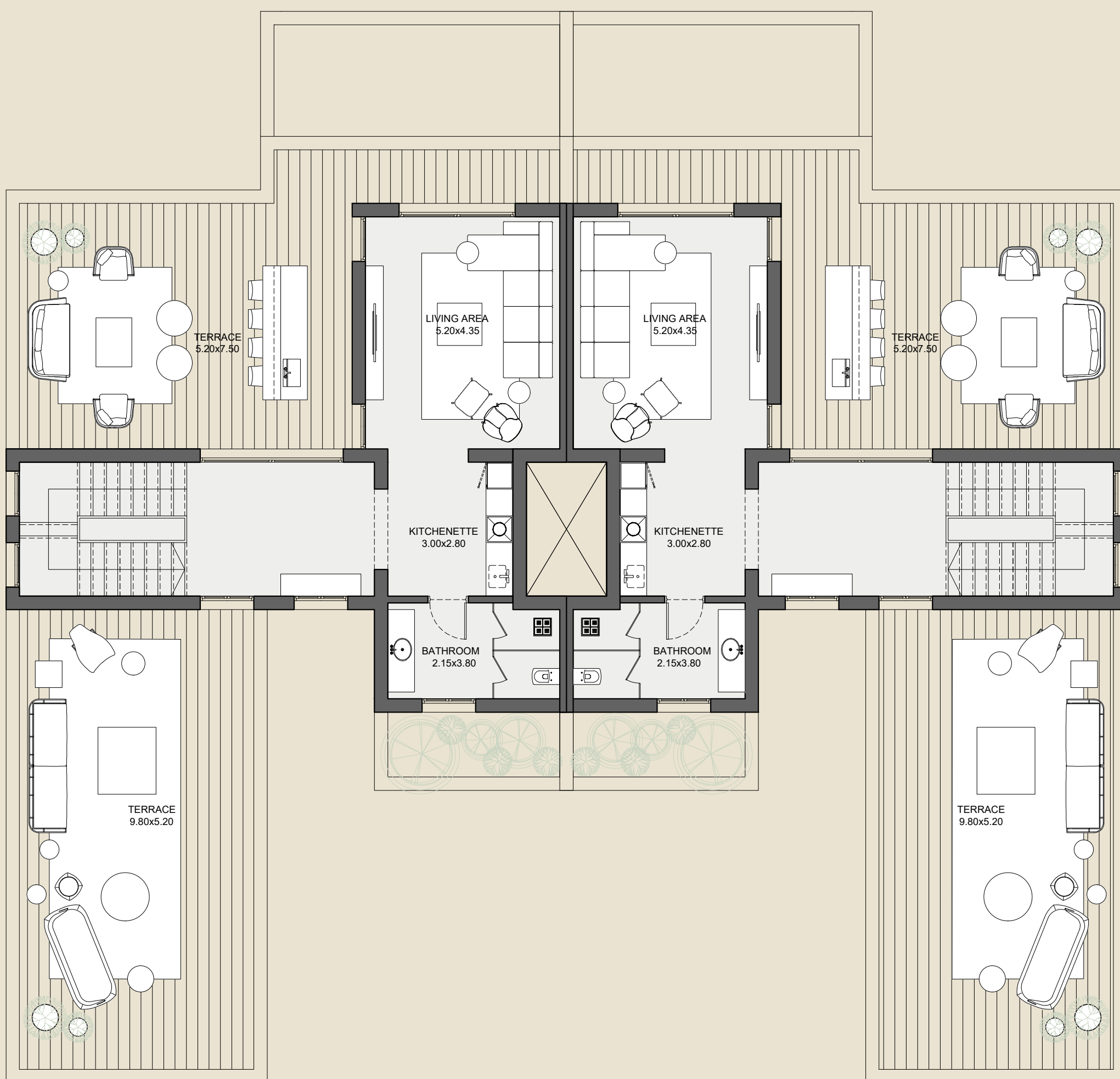
FIRST FLOOR



DISCLAIMER

1. Drawings are not to scale. 2. The architectural details, dimensions and area in this plan are based on Schematic Design information only, and final As-Built conditions may vary. 3. All units are sold as unfurnished villas, without furniture and furnishings, without white goods provisions, etc. 4. All images used are for illustrative purposes only and do not represent the actual size, features, specifications, fittings, and furnishings. 5. Newgiza reserves the right to make revisions/alterations, at its absolute discretion, and without liability.

ROOF



DISCLAIMER

1. Drawings are not to scale. 2. The architectural details, dimensions and area in this plan are based on Schematic Design information only, and final As-Built conditions may vary. 3. All units are sold as unfurnished villas, without furniture and furnishings, without white goods provisions, etc. 4. All images used are for illustrative purposes only and do not represent the actual size, features, specifications, fittings, and furnishings. 5. Newgiza reserves the right to make revisions/alterations, at its absolute discretion, and without liability.

TWINVILLA

09

BUA 399 SQM

SKY LAKES

NEWGIZA



SKY LAKES

NEWGIZA

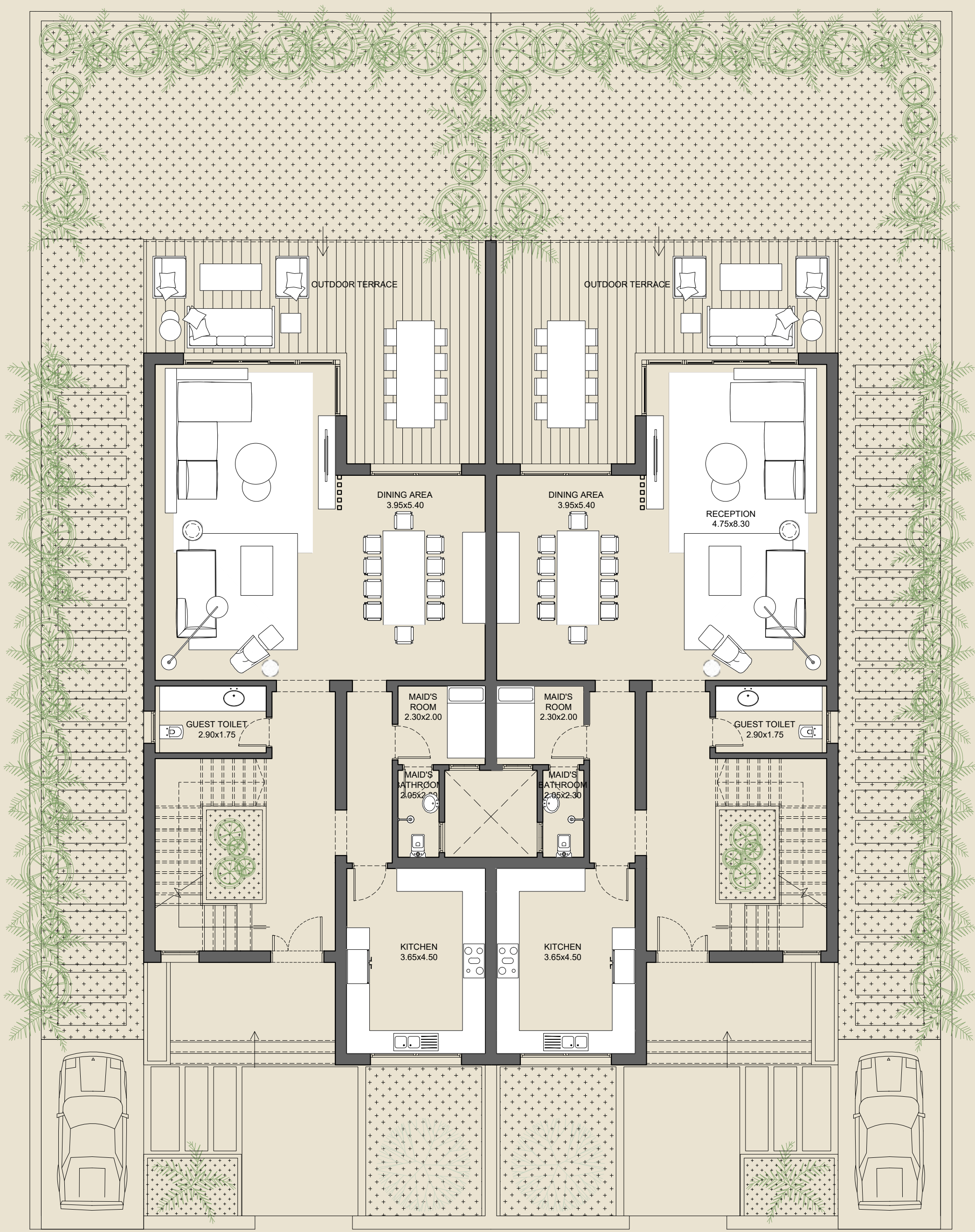


SKY LAKES

NEWGIZA



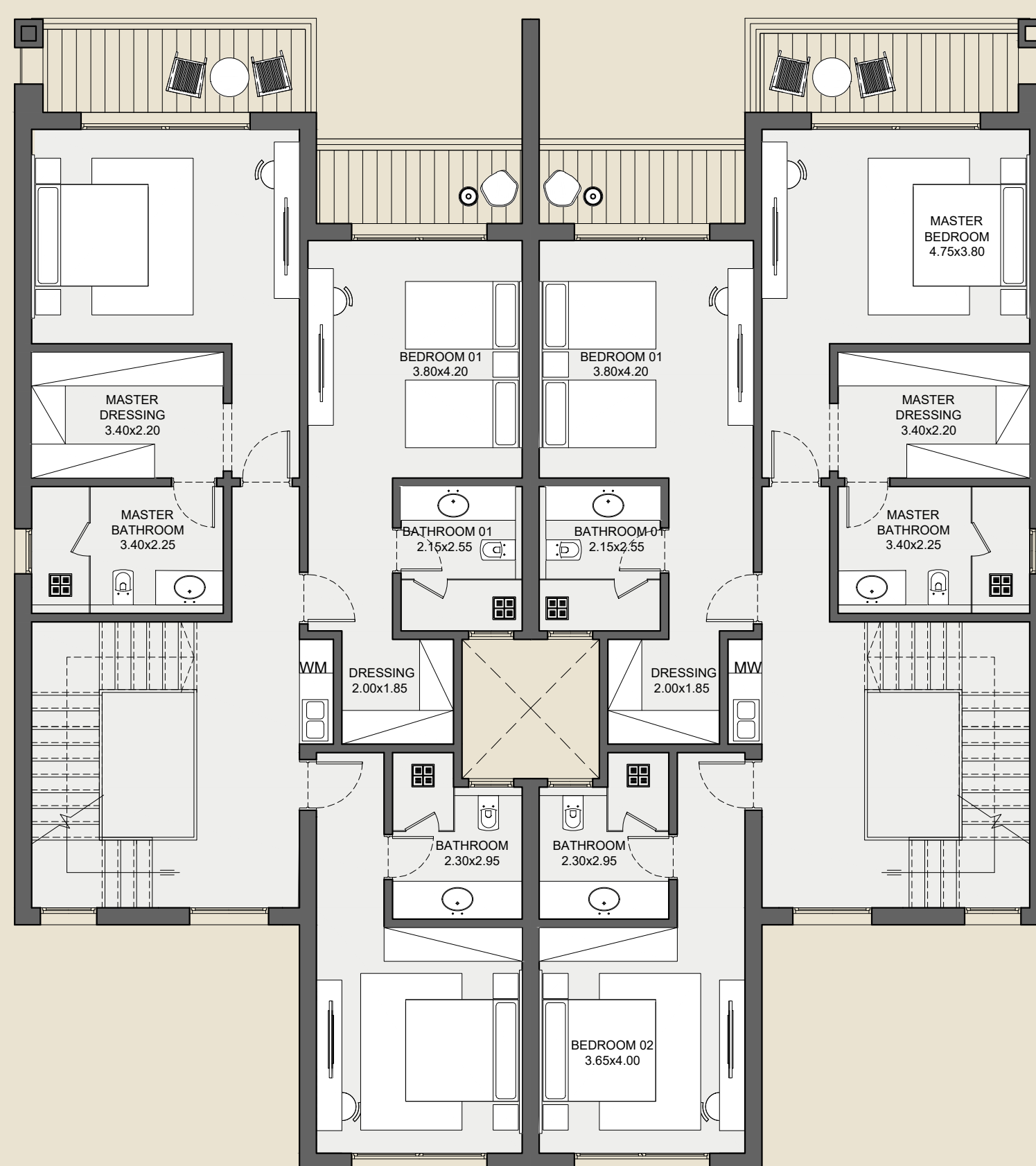
GROUND FLOOR



DISCLAIMER

1. Drawings are not to scale. 2. The architectural details, dimensions and area in this plan are based on Schematic Design information only, and final As-Built conditions may vary. 3. All units are sold as unfurnished villas, without furniture and furnishings, without white goods provisions, etc. 4. All images used are for illustrative purposes only and do not represent the actual size, features, specifications, fittings, and furnishings. 5. Newgiza reserves the right to make revisions/alterations, at its absolute discretion, and without liability.

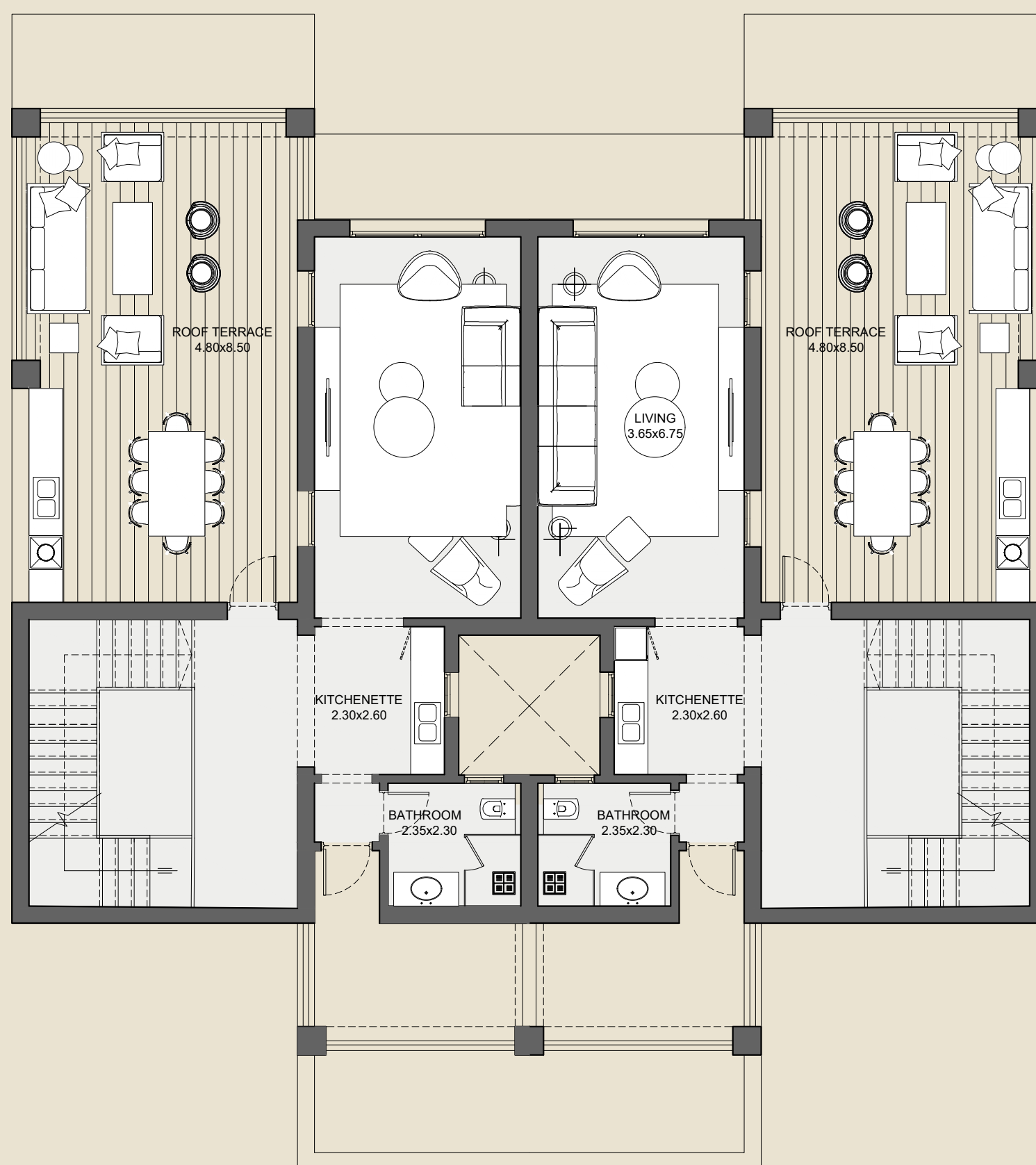
FIRST FLOOR



DISCLAIMER

1. Drawings are not to scale. 2. The architectural details, dimensions and area in this plan are based on Schematic Design information only, and final As-Built conditions may vary. 3. All units are sold as unfurnished villas, without furniture and furnishings, without white goods provisions, etc. 4. All images used are for illustrative purposes only and do not represent the actual size, features, specifications, fittings, and furnishings. 5. Newgiza reserves the right to make revisions/alterations, at its absolute discretion, and without liability.

ROOF



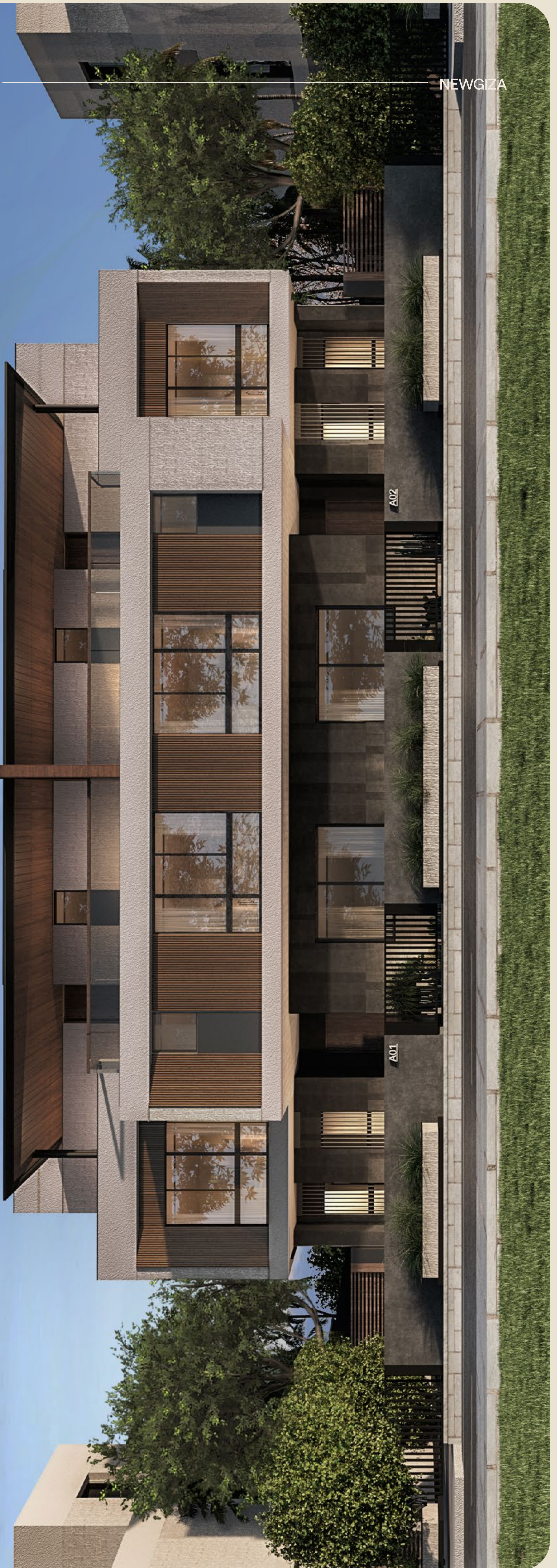
DISCLAIMER

1. Drawings are not to scale. 2. The architectural details, dimensions and area in this plan are based on Schematic Design information only, and final As-Built conditions may vary. 3. All units are sold as unfurnished villas, without furniture and furnishings, without white goods provisions, etc. 4. All images used are for illustrative purposes only and do not represent the actual size, features, specifications, fittings, and furnishings. 5. Newgiza reserves the right to make revisions/alterations, at its absolute discretion, and without liability.

TWINVILLA

10

BUA 442 SQM



A02

A01

SKY LAKES

NEWGIZA



SKY LAKES

NEWGIZA

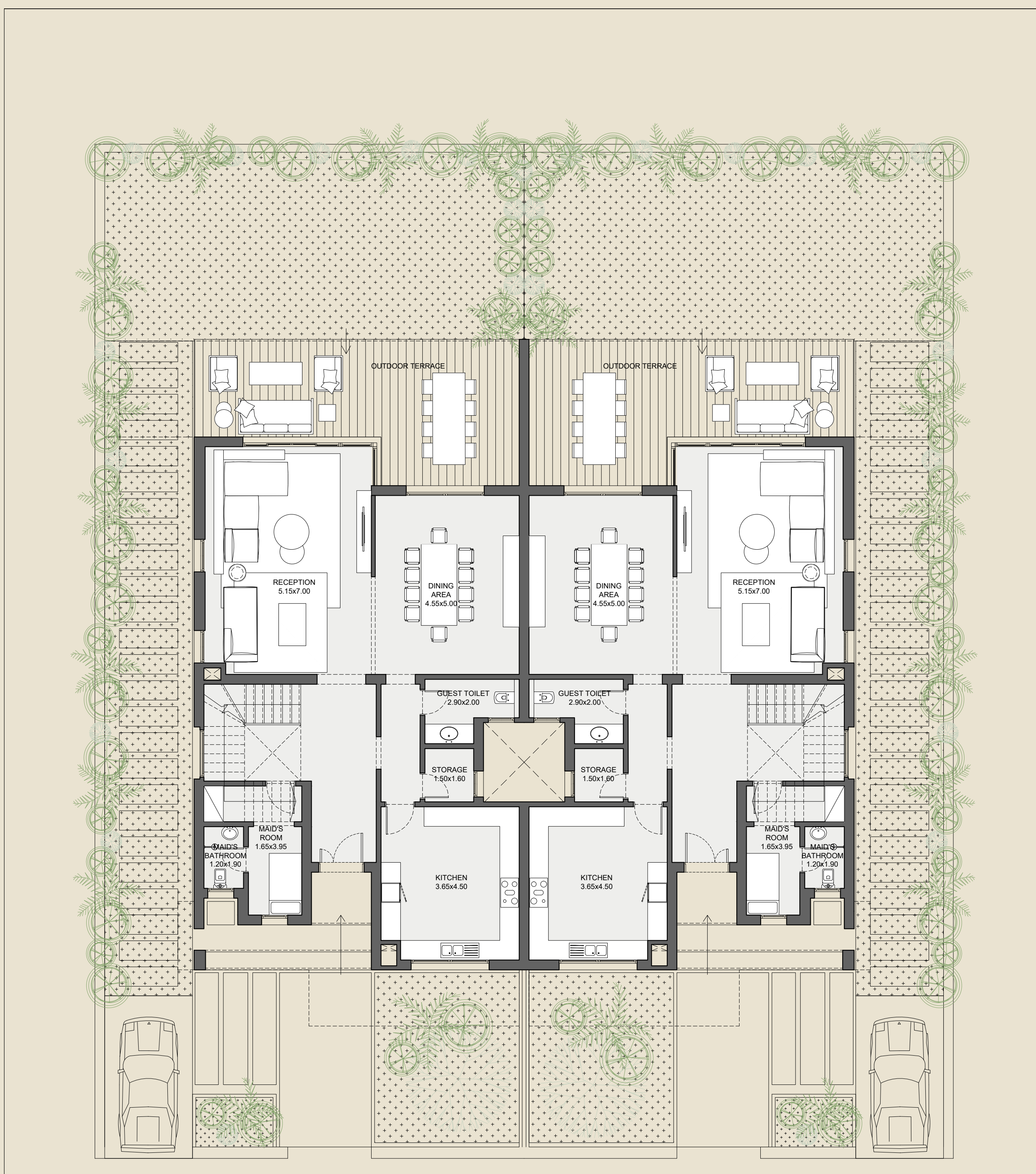


SKY LAKES

NEWGIZA



GROUND FLOOR



DISCLAIMER

1. Drawings are not to scale. 2. The architectural details, dimensions and area in this plan are based on Schematic Design information only, and final As-Built conditions may vary. 3. All units are sold as unfurnished villas, without furniture and furnishings, without white goods provisions, etc. 4. All images used are for illustrative purposes only and do not represent the actual size, features, specifications, fittings, and furnishings. 5. Newgiza reserves the right to make revisions/alterations, at its absolute discretion, and without liability.

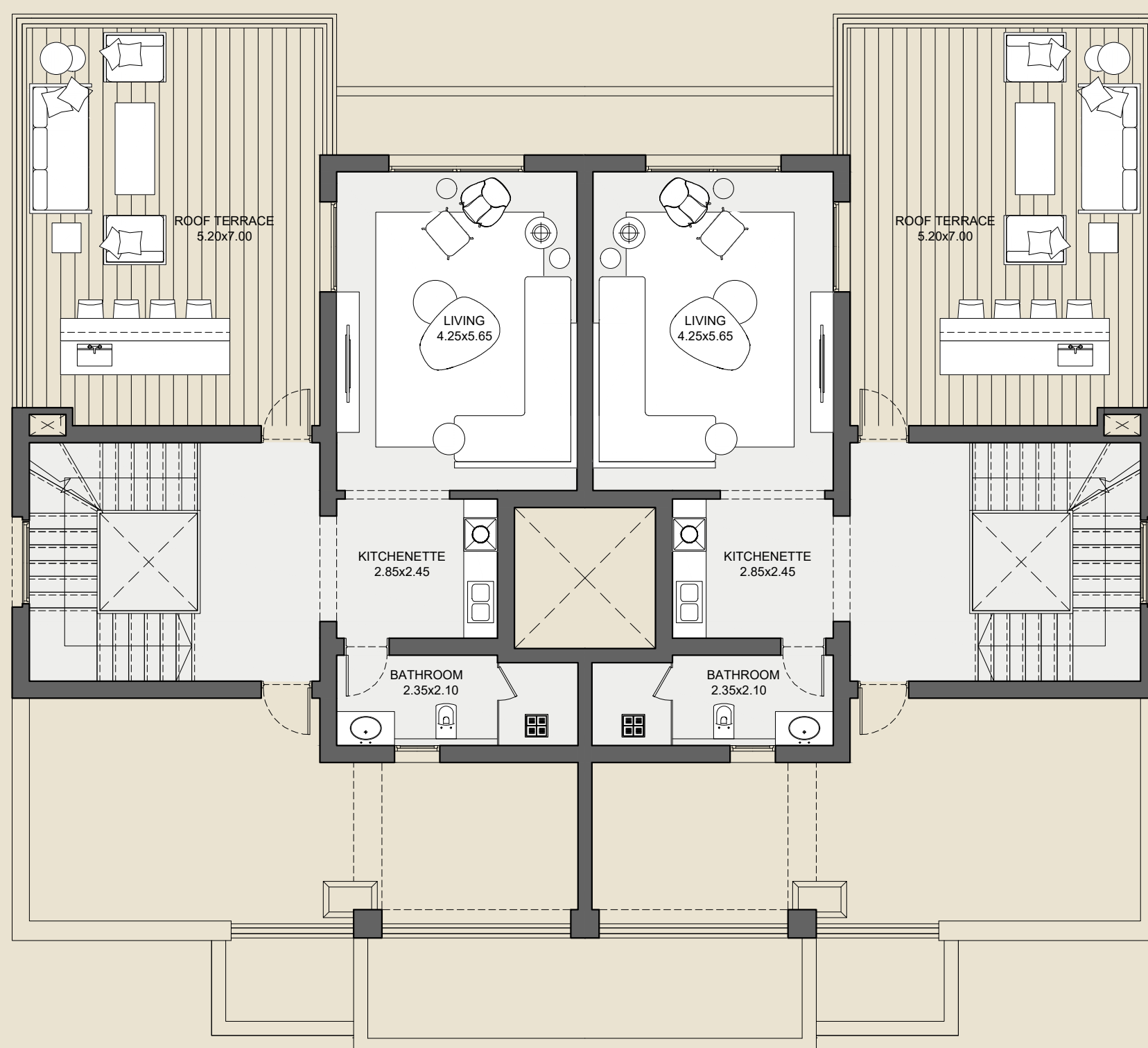
FIRST FLOOR



DISCLAIMER

1. Drawings are not to scale. 2. The architectural details, dimensions and area in this plan are based on Schematic Design information only, and final As-Built conditions may vary. 3. All units are sold as unfurnished villas, without furniture and furnishings, without white goods provisions, etc. 4. All images used are for illustrative purposes only and do not represent the actual size, features, specifications, fittings, and furnishings. 5. Newgiza reserves the right to make revisions/alterations, at its absolute discretion, and without liability.

ROOF



DISCLAIMER

1. Drawings are not to scale. 2. The architectural details, dimensions and area in this plan are based on Schematic Design information only, and final As-Built conditions may vary. 3. All units are sold as unfurnished villas, without furniture and furnishings, without white goods provisions, etc. 4. All images used are for illustrative purposes only and do not represent the actual size, features, specifications, fittings, and furnishings. 5. Newgiza reserves the right to make revisions/alterations, at its absolute discretion, and without liability.

TWINVILLA

11

BUA 406 SQM

SKY LAKES

NEWGIZA



A02

A01

SKY LAKES

NEWGIZA



A02

A01

SKY LAKES

NEWGIZA

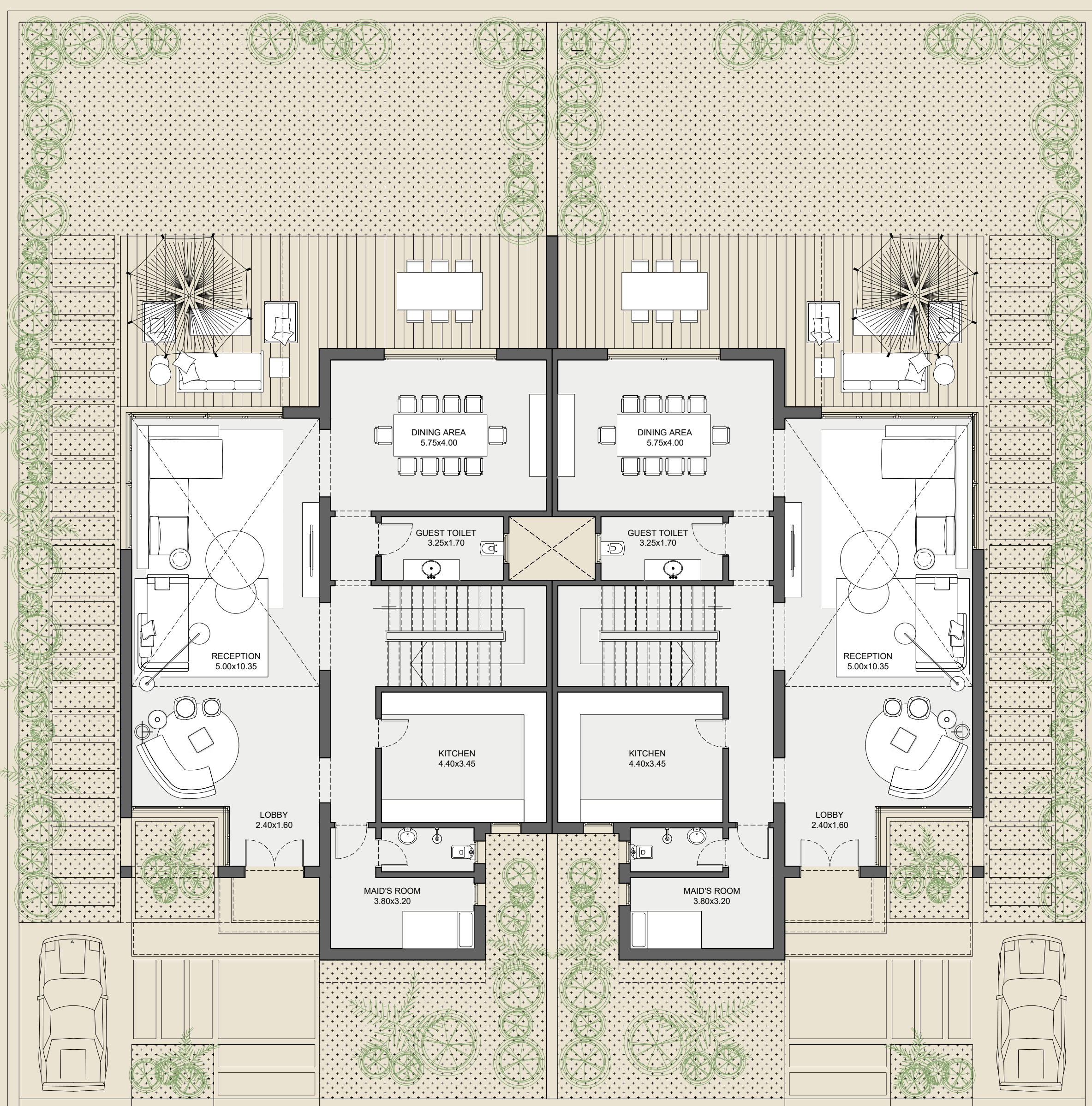


SKY LAKES

NEWGIZA



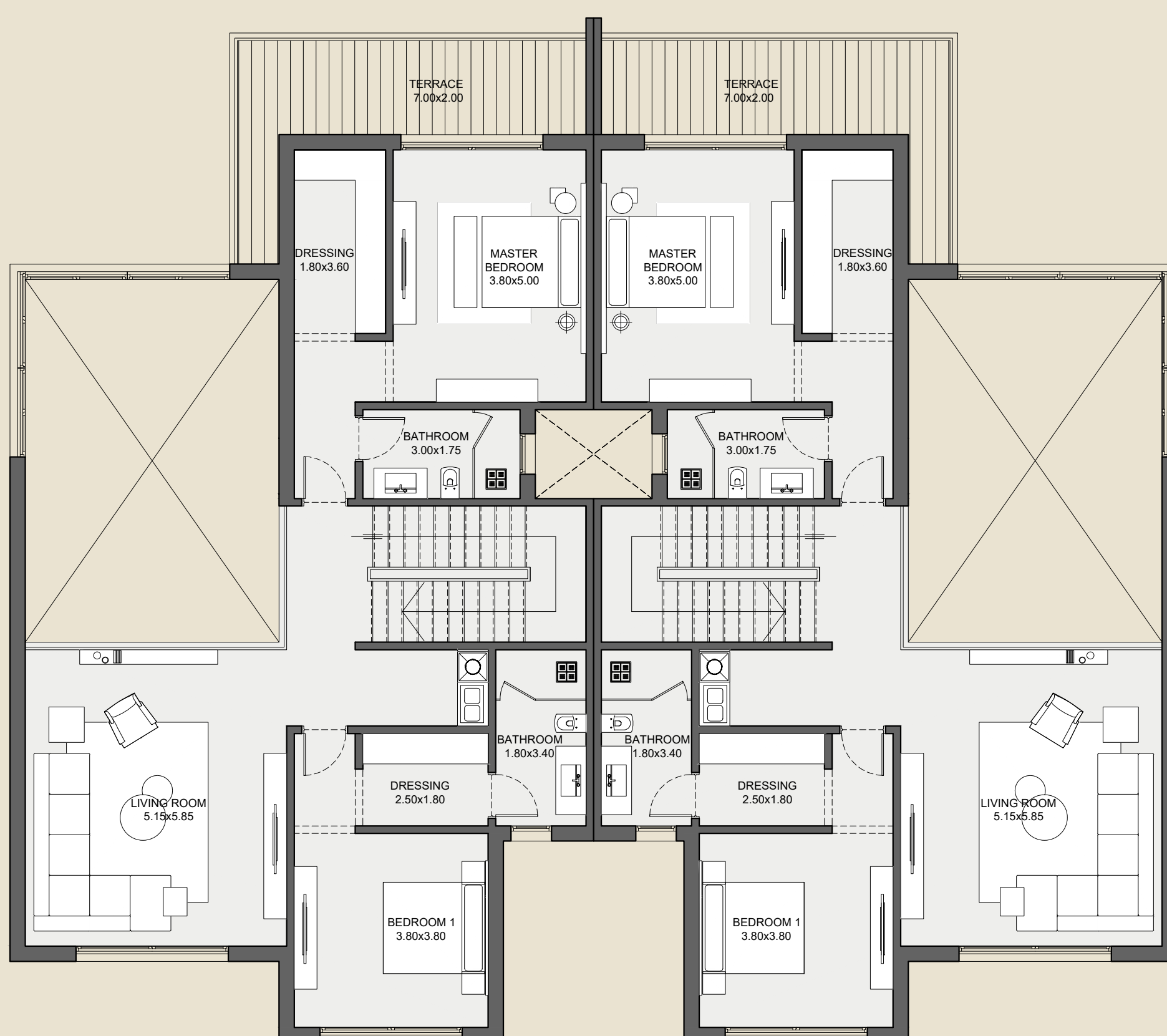
GROUND FLOOR



DISCLAIMER

1. Drawings are not to scale. 2. The architectural details, dimensions and area in this plan are based on Schematic Design information only, and final As-Built conditions may vary. 3. All units are sold as unfurnished villas, without furniture and furnishings, without white goods provisions, etc. 4. All images used are for illustrative purposes only and do not represent the actual size, features, specifications, fittings, and furnishings. 5. Newgiza reserves the right to make revisions/alterations, at its absolute discretion, and without liability.

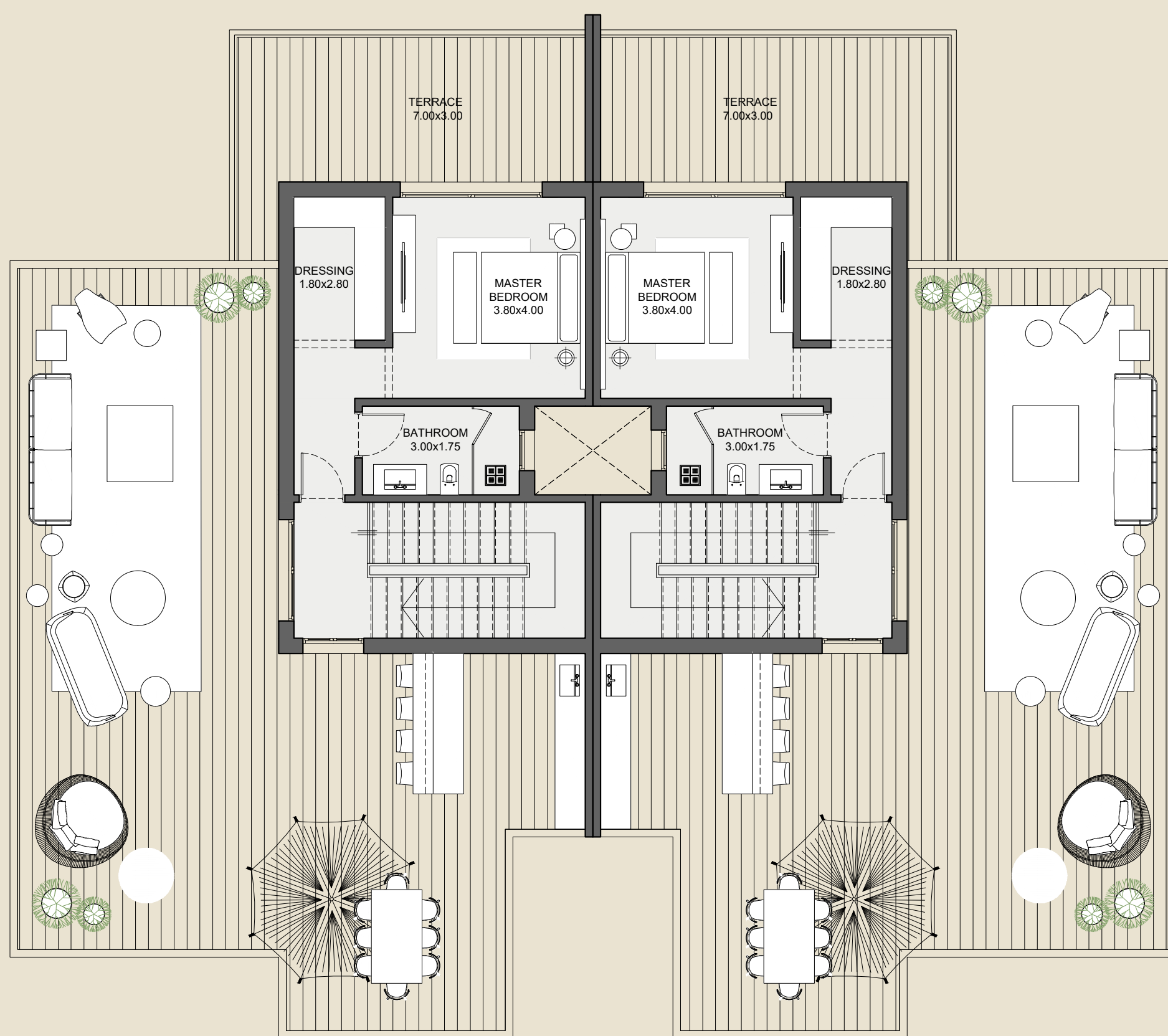
FIRST FLOOR



DISCLAIMER

1. Drawings are not to scale. 2. The architectural details, dimensions and area in this plan are based on Schematic Design information only, and final As-Built conditions may vary. 3. All units are sold as unfurnished villas, without furniture and furnishings, without white goods provisions, etc. 4. All images used are for illustrative purposes only and do not represent the actual size, features, specifications, fittings, and furnishings. 5. Newgiza reserves the right to make revisions/alterations, at its absolute discretion, and without liability.

ROOF



DISCLAIMER

1. Drawings are not to scale. 2. The architectural details, dimensions and area in this plan are based on Schematic Design information only, and final As-Built conditions may vary. 3. All units are sold as unfurnished villas, without furniture and furnishings, without white goods provisions, etc. 4. All images used are for illustrative purposes only and do not represent the actual size, features, specifications, fittings, and furnishings. 5. Newgiza reserves the right to make revisions/alterations, at its absolute discretion, and without liability.

GRAND
LAKESIDE

SKY LAKES

NEWGIZA

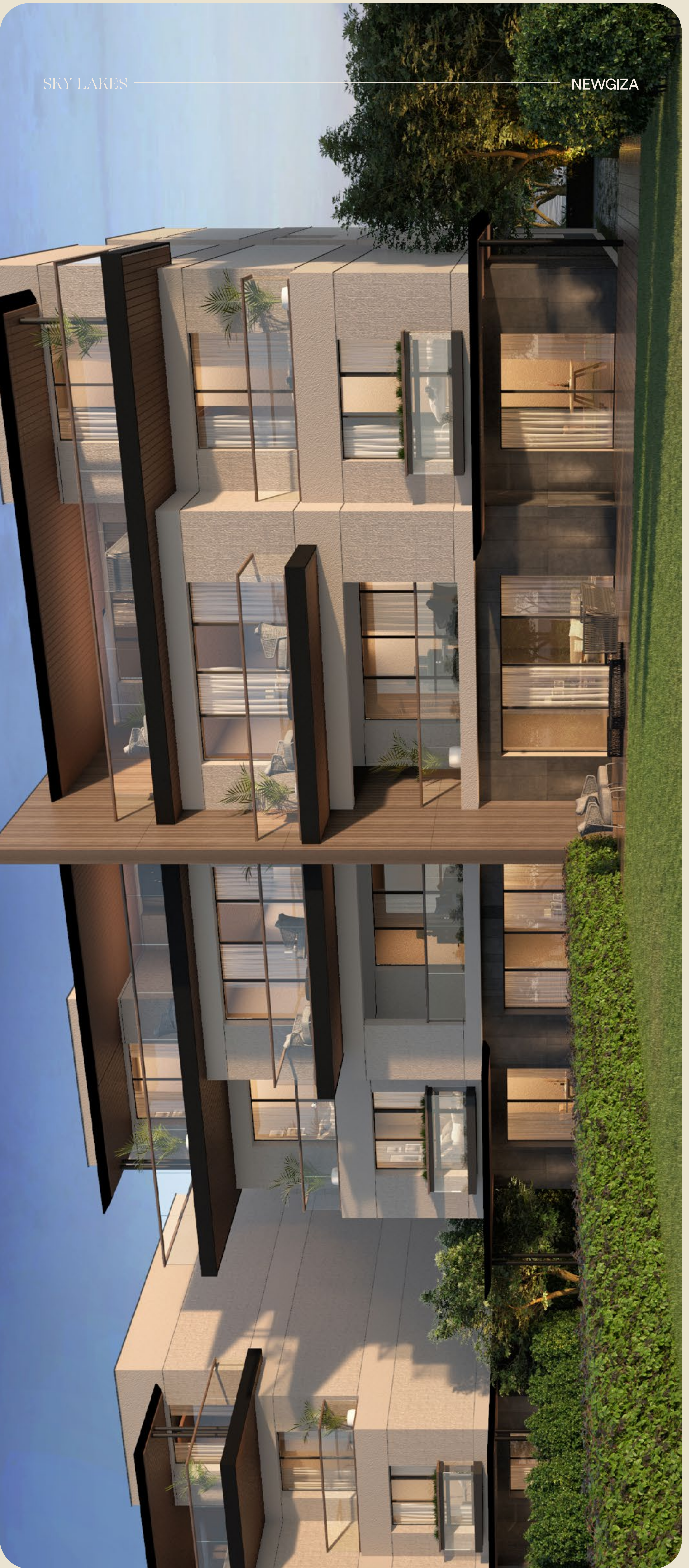


A02

A01

SKY LAKES

NEWGIZA

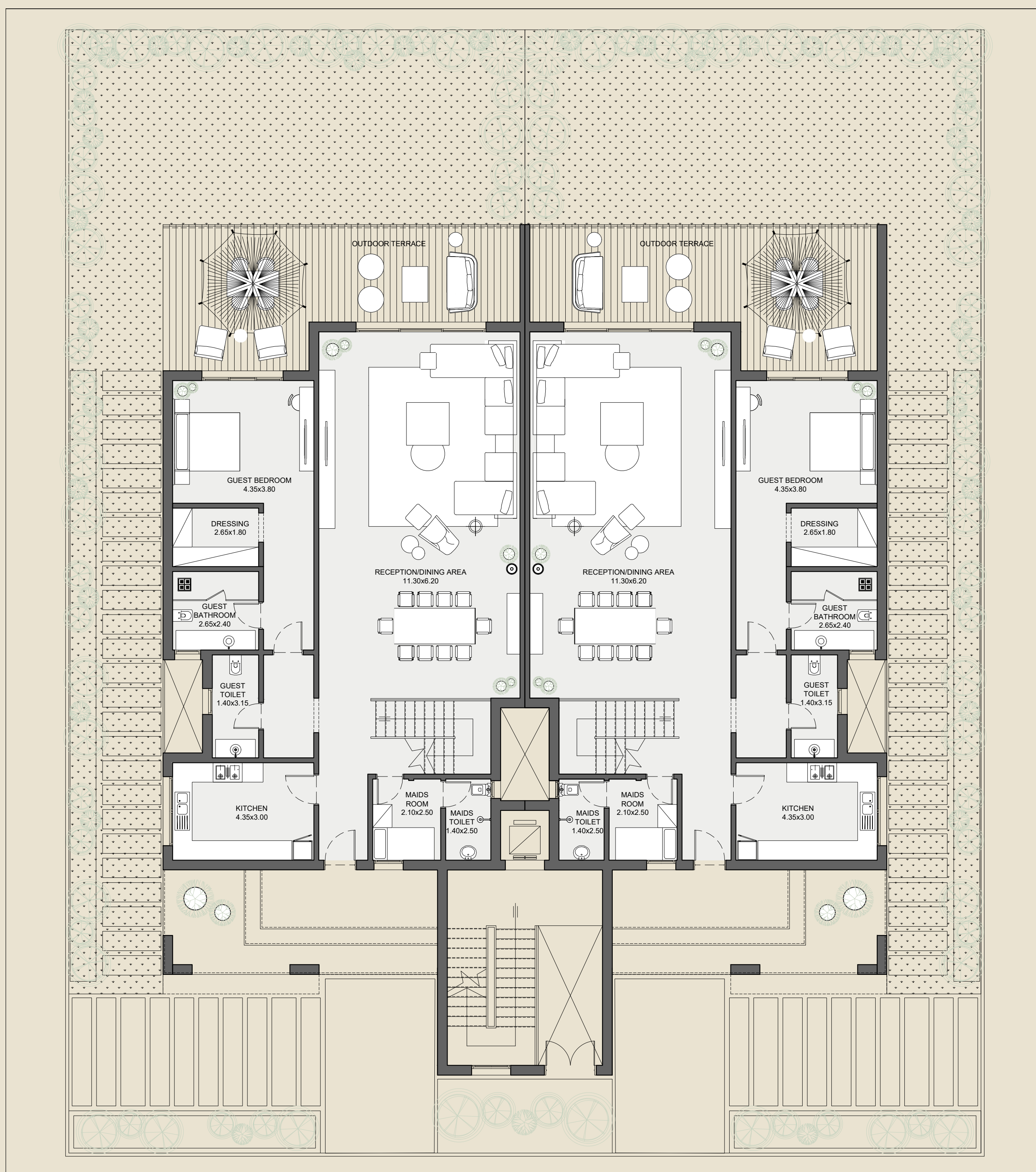


SKY LAKES

NEWGIZA



GROUND FLOOR



WATER FRONT BUA 403 SQM

DISCLAIMER

1. Drawings are not to scale. 2. The architectural details, dimensions and area in this plan are based on Schematic Design information only, and final As-Built conditions may vary. 3. All units are sold as unfurnished villas, without furniture and furnishings, without white goods provisions, etc. 4. All images used are for illustrative purposes only and do not represent the actual size, features, specifications, fittings, and furnishings. 5. Newgiza reserves the right to make revisions/alterations, at its absolute discretion, and without liability.

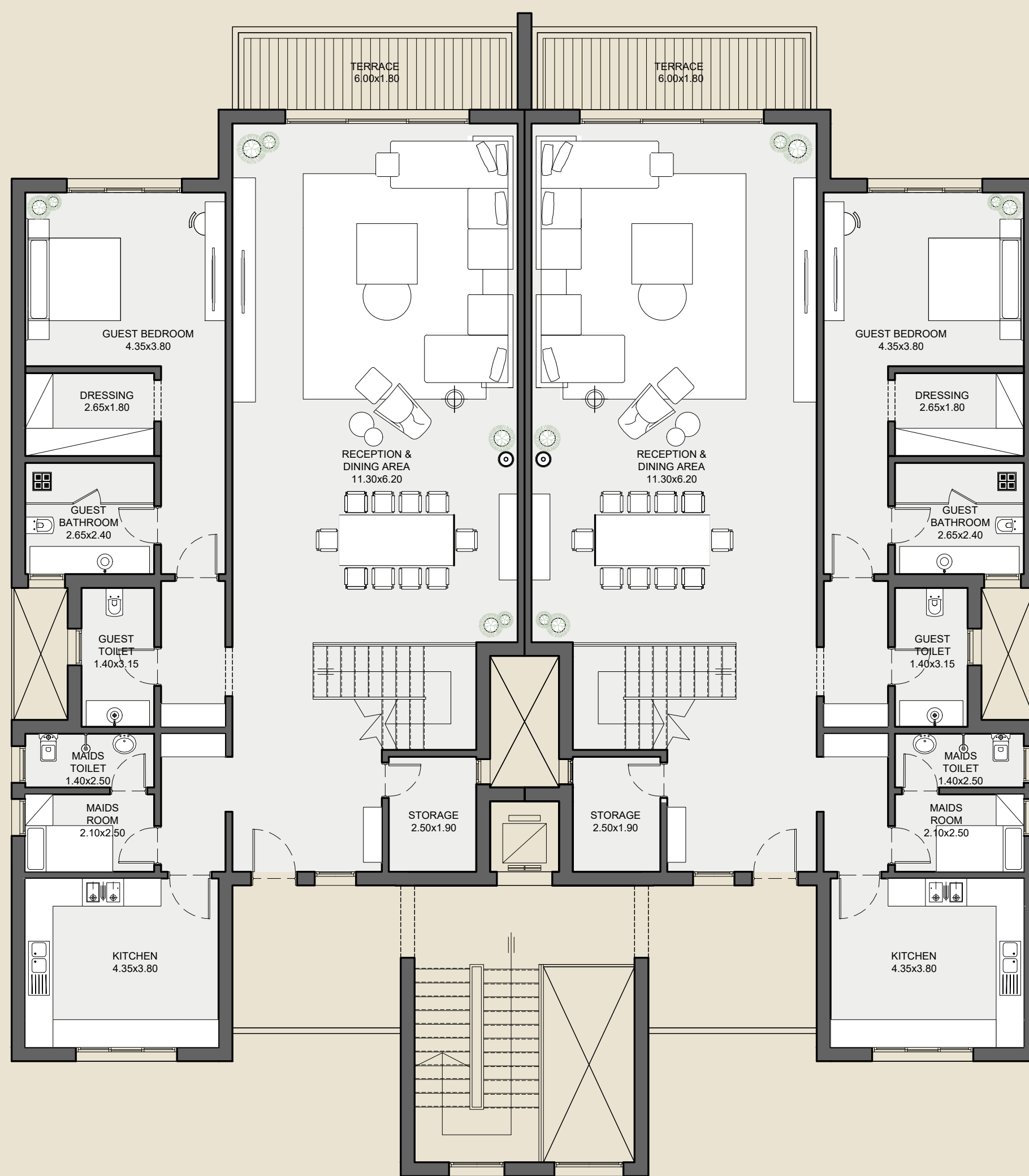
FIRST FLOOR



DISCLAIMER

1. Drawings are not to scale. 2. The architectural details, dimensions and area in this plan are based on Schematic Design information only, and final As-Built conditions may vary. 3. All units are sold as unfurnished villas, without furniture and furnishings, without white goods provisions, etc. 4. All images used are for illustrative purposes only and do not represent the actual size, features, specifications, fittings, and furnishings. 5. Newgiza reserves the right to make revisions/alterations, at its absolute discretion, and without liability.

SECOND FLOOR



SKY LOFT BUA 418 SQM

DISCLAIMER

1. Drawings are not to scale. 2. The architectural details, dimensions and area in this plan are based on Schematic Design information only, and final As-Built conditions may vary. 3. All units are sold as unfurnished villas, without furniture and furnishings, without white goods provisions, etc. 4. All images used are for illustrative purposes only and do not represent the actual size, features, specifications, fittings, and furnishings. 5. Newgiza reserves the right to make revisions/alterations, at its absolute discretion, and without liability.

ROOF



DISCLAIMER

1. Drawings are not to scale. 2. The architectural details, dimensions and area in this plan are based on Schematic Design information only, and final As-Built conditions may vary. 3. All units are sold as unfurnished villas, without furniture and furnishings, without white goods provisions, etc. 4. All images used are for illustrative purposes only and do not represent the actual size, features, specifications, fittings, and furnishings. 5. Newgiza reserves the right to make revisions/alterations, at its absolute discretion, and without liability.

STANDARD
LAKESIDE

SKY LAKES

NEWGIZA



A02

A01

SKY LAKES

NEWGIZA



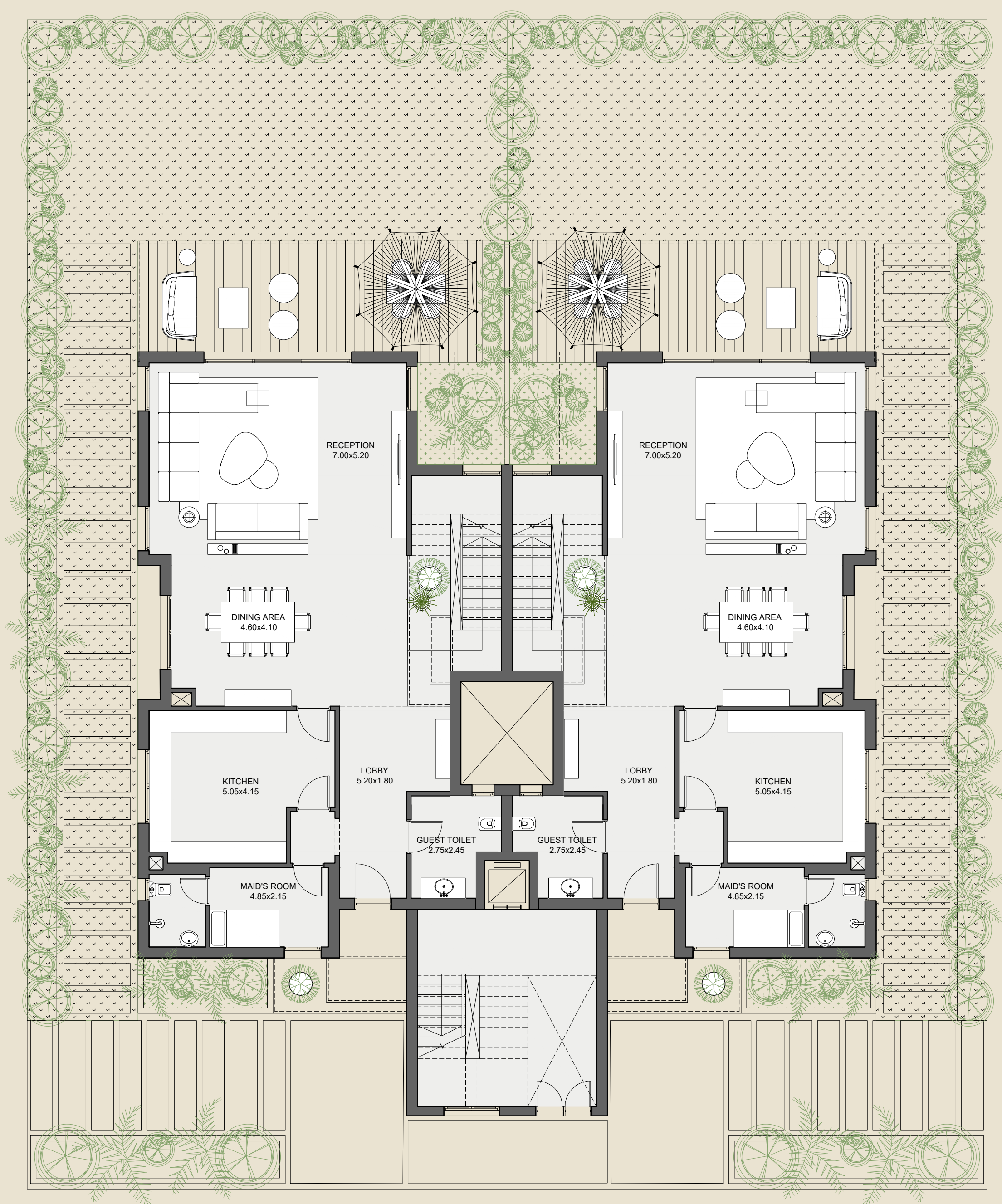


SKY LAKES

NEWGIZA



GROUND FLOOR



WATER FRONT BUA 324 SQM

DISCLAIMER

1. Drawings are not to scale. 2. The architectural details, dimensions and area in this plan are based on Schematic Design information only, and final As-Built conditions may vary. 3. All units are sold as unfurnished villas, without furniture and furnishings, without white goods provisions, etc. 4. All images used are for illustrative purposes only and do not represent the actual size, features, specifications, fittings, and furnishings. 5. Newgiza reserves the right to make revisions/alterations, at its absolute discretion, and without liability.

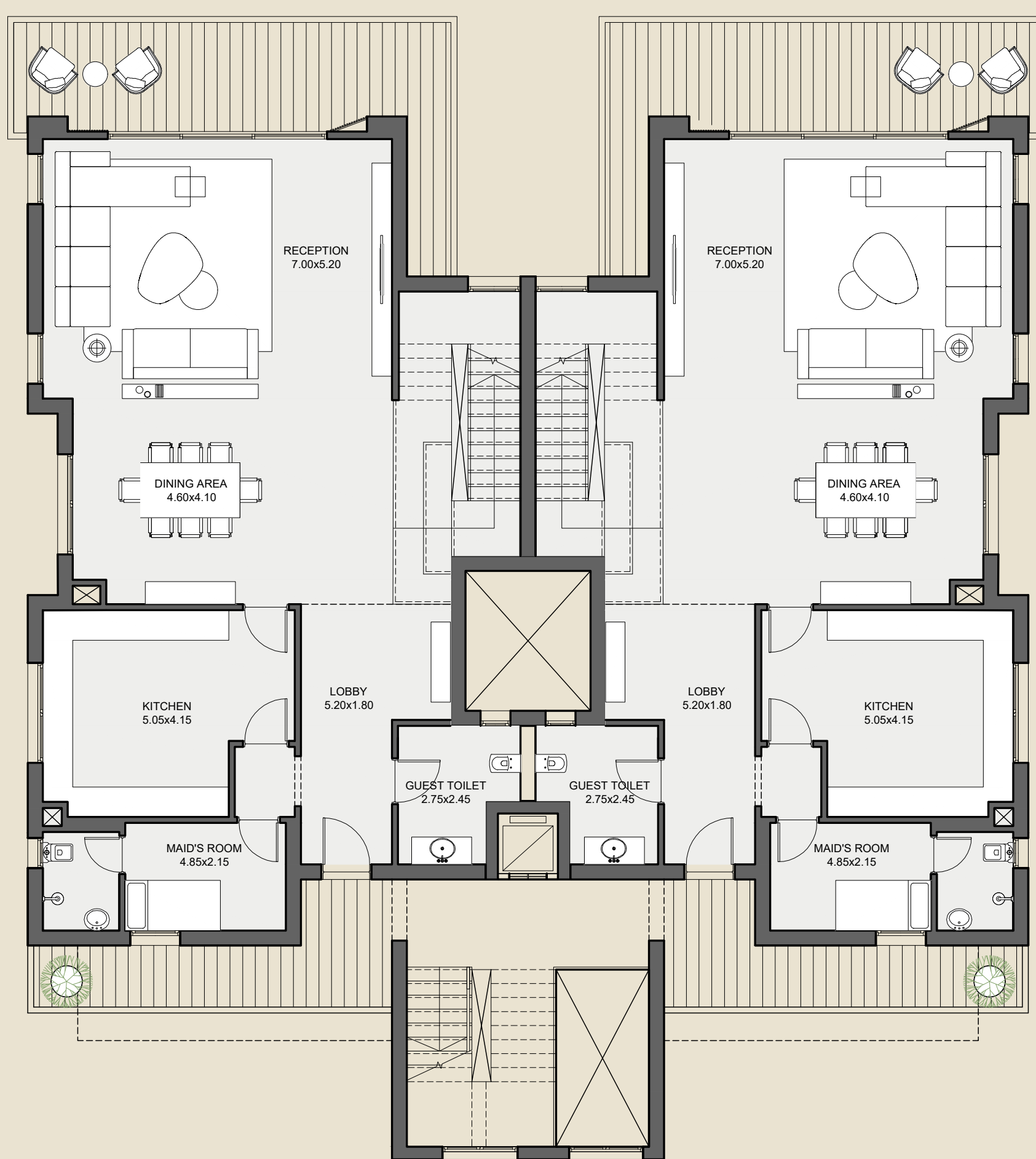
FIRST FLOOR



DISCLAIMER

1. Drawings are not to scale. 2. The architectural details, dimensions and area in this plan are based on Schematic Design information only, and final As-Built conditions may vary. 3. All units are sold as unfurnished villas, without furniture and furnishings, without white goods provisions, etc. 4. All images used are for illustrative purposes only and do not represent the actual size, features, specifications, fittings, and furnishings. 5. Newgiza reserves the right to make revisions/alterations, at its absolute discretion, and without liability.

SECOND FLOOR



SKY LOFT BUA 330 SQM

DISCLAIMER

1. Drawings are not to scale. 2. The architectural details, dimensions and area in this plan are based on Schematic Design information only, and final As-Built conditions may vary. 3. All units are sold as unfurnished villas, without furniture and furnishings, without white goods provisions, etc. 4. All images used are for illustrative purposes only and do not represent the actual size, features, specifications, fittings, and furnishings. 5. Newgiza reserves the right to make revisions/alterations, at its absolute discretion, and without liability.

ROOF



DISCLAIMER

1. Drawings are not to scale. 2. The architectural details, dimensions and area in this plan are based on Schematic Design information only, and final As-Built conditions may vary. 3. All units are sold as unfurnished villas, without furniture and furnishings, without white goods provisions, etc. 4. All images used are for illustrative purposes only and do not represent the actual size, features, specifications, fittings, and furnishings. 5. Newgiza reserves the right to make revisions/alterations, at its absolute discretion, and without liability.

NEWGIZA